



ELECTRONIC COPY

LG630434275

Report verification at igi.org

LABORATORY GROWN DIAMOND REPORT

April 23, 2024
IGI Report Number LG630434275
Description LABORATORY GROWN DIAMOND
Shape and Cutting Style ROUND BRILLIANT
Measurements 9.14 - 9.17 X 5.64 MM

GRADING RESULTS

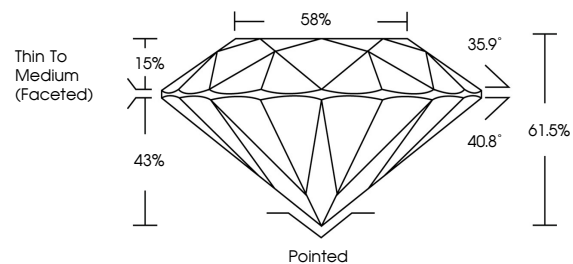
Carat Weight 2.92 CARATS
Color Grade F
Clarity Grade VVS 1
Cut Grade IDEAL

ADDITIONAL GRADING INFORMATION

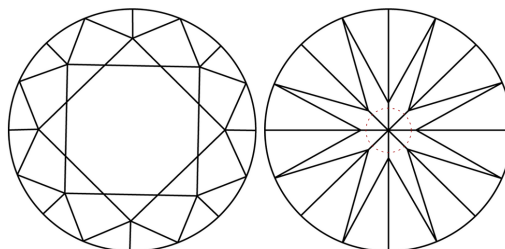
Polish EXCELLENT
Symmetry EXCELLENT
Fluorescence NONE
Inscription(s) IGI LG630434275

Comments: As Grown - No indication of post-growth treatment. This Laboratory Grown Diamond was created by High Pressure High Temperature (HPHT) growth process. Type II

PROPORTIONS



CLARITY CHARACTERISTICS



KEY TO SYMBOLS

Red symbols indicate internal characteristics. Green symbols indicate external characteristics.

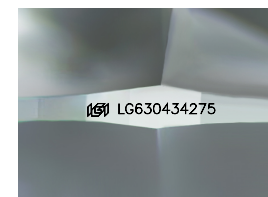
GRADING SCALES

CLARITY

Table mapping clarity grades (IF, VVS 1-2, VS 1-2, SI 1-2, I 1-3) to internal characteristics (Internally Flawless, Very Very Slightly Included, Very Slightly Included, Slightly Included, Included).

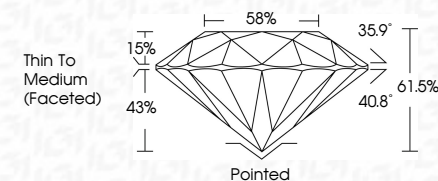
COLOR

Table mapping color grades (D, E, F, G, H, I, J, Faint, Very Light, Light).



Sample Image Used

April 23, 2024
IGI Report Number LG630434275
Description LABORATORY GROWN DIAMOND
Shape and Cutting Style ROUND BRILLIANT
Measurements 9.14 - 9.17 X 5.64 MM
GRADING RESULTS
Carat Weight 2.92 CARATS
Color Grade F
Clarity Grade VVS 1
Cut Grade IDEAL



ADDITIONAL GRADING INFORMATION

Polish EXCELLENT
Symmetry EXCELLENT
Fluorescence NONE
Inscription(s) IGI LG630434275
Comments: As Grown - No indication of post-growth treatment. This Laboratory Grown Diamond was created by High Pressure High Temperature (HPHT) growth process. Type II



IGI

April 23, 2024
IGI Report No LG630434275
ROUND BRILLIANT
9.14 - 9.17 X 5.64 MM
2.92 CARATS
Color Grade F
Clarity Grade VVS 1
Cut Grade IDEAL
Depth 61.5%
Table 58%
Girdle Thin To Medium (Faceted)
Culet Pointed
Polish EXCELLENT
Symmetry EXCELLENT
Fluorescence NONE
Inscriptions(s) IGI LG630434275
Comments: As Grown - No indication of post-growth treatment. This Laboratory Grown Diamond was created by High Pressure High Temperature (HPHT) growth process. Type II