



ELECTRONIC COPY

LG630441899

Report verification at igi.org

LABORATORY GROWN DIAMOND REPORT

April 15, 2024
 IGI Report Number **LG630441899**
 Description **LABORATORY GROWN
DIAMOND**
 Shape and Cutting Style **EMERALD CUT**
 Measurements **8.62 X 6.06 X 4.19 MM**

GRADING RESULTS

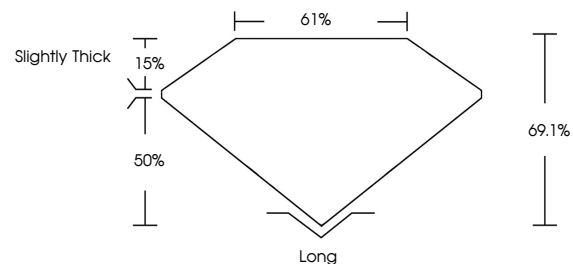
Carat Weight **2.12 CARATS**
 Color Grade **I**
 Clarity Grade **VS 2**

ADDITIONAL GRADING INFORMATION

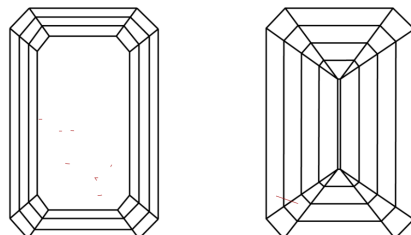
Polish **EXCELLENT**
 Symmetry **EXCELLENT**
 Fluorescence **NONE**
 Inscription(s) **IGI LG630441899**

Comments: This Laboratory Grown Diamond was created by Chemical Vapor Deposition (CVD) growth process and may include post-growth treatment. Type IIa

PROPORTIONS



CLARITY CHARACTERISTICS



KEY TO SYMBOLS

Red symbols indicate internal characteristics.
 Green symbols indicate external characteristics.

GRADING SCALES

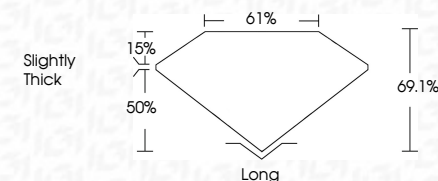
CLARITY

IF	VVS ¹⁻²	VS ¹⁻²	SI ¹⁻²	I ¹⁻³
Internally Flawless	Very Very Slightly Included	Very Slightly Included	Slightly Included	Included

COLOR

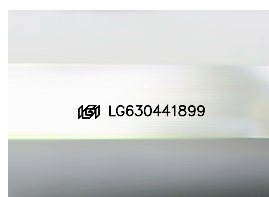
D	E	F	G	H	I	J	Faint	Very Light	Light
---	---	---	---	---	---	---	-------	------------	-------

April 15, 2024
 IGI Report Number **LG630441899**
 Description **LABORATORY GROWN
DIAMOND**
 Shape and Cutting Style **EMERALD CUT**
 Measurements **8.62 X 6.06 X 4.19 MM**
GRADING RESULTS
 Carat Weight **2.12 CARATS**
 Color Grade **I**
 Clarity Grade **VS 2**



ADDITIONAL GRADING INFORMATION

Polish **EXCELLENT**
 Symmetry **EXCELLENT**
 Fluorescence **NONE**
 Inscription(s) **IGI LG630441899**
 Comments: This Laboratory Grown Diamond was created by Chemical Vapor Deposition (CVD) growth process and may include post-growth treatment. Type IIa



Sample Image Used



IGI

April 15, 2024
 IGI Report No. LG630441899
EMERALD CUT
 8.62 X 6.06 X 4.19 MM
 Carat Weight **2.12 CARATS**
 Color Grade **I**
 Clarity Grade **VS 2**
 Depth **69.1%**
 Table **61%**
 Girdle **Slightly Thick**
 Culet **Long**
 Polish **EXCELLENT**
 Symmetry **EXCELLENT**
 Fluorescence **NONE**
 Inscription(s) **IGI LG630441899**

Comments: This Laboratory Grown Diamond was created by Chemical Vapor Deposition (CVD) growth process and may include post-growth treatment. Type IIa