



**ELECTRONIC COPY**

**LABORATORY GROWN DIAMOND REPORT**

April 19, 2024  
 IGI Report Number **LG630452337**  
 Description **LABORATORY GROWN  
DIAMOND**  
 Shape and Cutting Style **ROUND BRILLIANT**  
 Measurements **9.05 - 9.11 X 5.77 MM**

**GRADING RESULTS**

Carat Weight **2.98 CARATS**  
 Color Grade **H**  
 Clarity Grade **VS 1**  
 Cut Grade **EXCELLENT**

**ADDITIONAL GRADING INFORMATION**

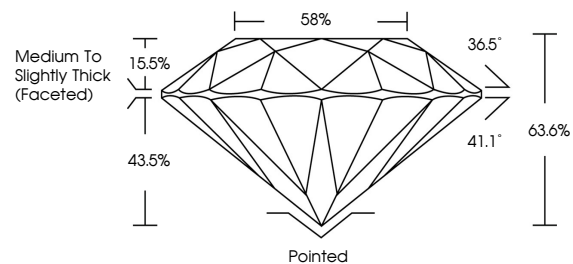
Polish **EXCELLENT**  
 Symmetry **EXCELLENT**  
 Fluorescence **NONE**  
 Inscription(s) **IGI LG630452337**

Comments: This Laboratory Grown Diamond was created by Chemical Vapor Deposition (CVD) growth process and may include post-growth treatment. Type IIa

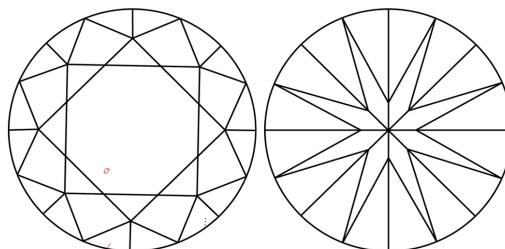
**LABORATORY GROWN DIAMOND REPORT**

**LG630452337**  
 Report verification at [igi.org](http://igi.org)

**PROPORTIONS**



**CLARITY CHARACTERISTICS**



**KEY TO SYMBOLS**

Red symbols indicate internal characteristics.  
 Green symbols indicate external characteristics.

**LABORATORY GROWN  
DIAMOND REPORT**

**GRADING SCALES**

**CLARITY**

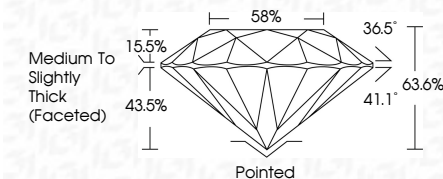
IF	VVS <sup>1-2</sup>	VS <sup>1-2</sup>	SI <sup>1-2</sup>	I <sup>1-3</sup>
Internally Flawless	Very Very Slightly Included	Very Slightly Included	Slightly Included	Included

**COLOR**

D	E	F	G	H	I	J	Faint	Very Light	Light
---	---	---	---	---	---	---	-------	------------	-------

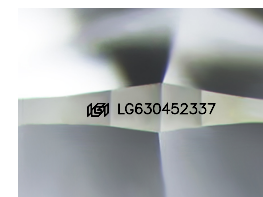
**LABORATORY GROWN DIAMOND REPORT**

April 19, 2024  
 IGI Report Number **LG630452337**  
 Description **LABORATORY GROWN  
DIAMOND**  
 Shape and Cutting Style **ROUND BRILLIANT**  
 Measurements **9.05 - 9.11 X 5.77 MM**  
**GRADING RESULTS**  
 Carat Weight **2.98 CARATS**  
 Color Grade **H**  
 Clarity Grade **VS 1**  
 Cut Grade **EXCELLENT**



**ADDITIONAL GRADING INFORMATION**

Polish **EXCELLENT**  
 Symmetry **EXCELLENT**  
 Fluorescence **NONE**  
 Inscription(s) **IGI LG630452337**  
 Comments: This Laboratory Grown Diamond was created by Chemical Vapor Deposition (CVD) growth process and may include post-growth treatment. Type IIa



Sample Image Used



**IGI**

April 19, 2024  
 IGI Report No LG630452337  
**ROUND BRILLIANT**  
 9.05 - 9.11 X 5.77 MM  
 2.98 CARATS  
 H  
 VS 1  
 EXCELLENT  
 63.6%  
 58%  
 Medium To Slightly Thick (Faceted)  
 Pointed  
 EXCELLENT  
 EXCELLENT  
 NONE  
 IGI LG630452337  
 Comments: This Laboratory Grown Diamond was created by Chemical Vapor Deposition (CVD) growth process and may include post-growth treatment. Type IIa