



ELECTRONIC COPY

LABORATORY GROWN DIAMOND REPORT

LG630455773

Report verification at igi.org

LABORATORY GROWN DIAMOND REPORT

LABORATORY GROWN DIAMOND REPORT

LABORATORY GROWN DIAMOND REPORT

April 16, 2024
IGI Report Number LG630455773
Description LABORATORY GROWN DIAMOND
Shape and Cutting Style EMERALD CUT
Measurements 7.31 X 4.92 X 3.34 MM

GRADING RESULTS

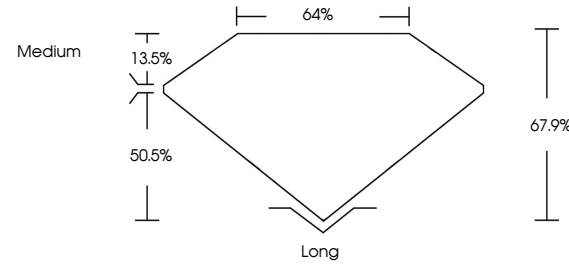
Carat Weight 1.23 CARAT
Color Grade F
Clarity Grade VS 1

ADDITIONAL GRADING INFORMATION

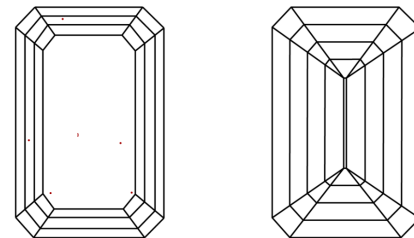
Polish EXCELLENT
Symmetry EXCELLENT
Fluorescence NONE
Inscription(s) IGI LG630455773

Comments: This Laboratory Grown Diamond was created by Chemical Vapor Deposition (CVD) growth process and may include post-growth treatment. Type IIa

PROPORTIONS



CLARITY CHARACTERISTICS



KEY TO SYMBOLS

Red symbols indicate internal characteristics.
Green symbols indicate external characteristics.

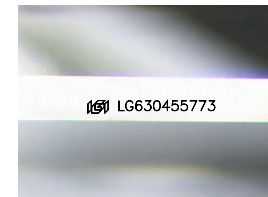
GRADING SCALES

CLARITY

Table showing clarity scales: IF, VVS 1-2, VS 1-2, SI 1-2, I 1-3. Internally Flawless, Very Very Slightly Included, Very Slightly Included, Slightly Included, Included.

COLOR

Table showing color scales: D, E, F, G, H, I, J, Faint, Very Light, Light.



Sample Image Used

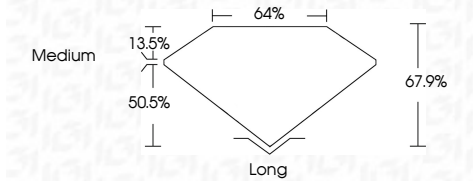
April 16, 2024
IGI Report Number LG630455773
Description LABORATORY GROWN DIAMOND
Shape and Cutting Style EMERALD CUT
Measurements 7.31 X 4.92 X 3.34 MM

GRADING RESULTS

Carat Weight 1.23 CARAT
Color Grade F
Clarity Grade VS 1

ADDITIONAL GRADING INFORMATION

Polish EXCELLENT
Symmetry EXCELLENT
Fluorescence NONE
Inscription(s) IGI LG630455773
Comments: This Laboratory Grown Diamond was created by Chemical Vapor Deposition (CVD) growth process and may include post-growth treatment. Type IIa



IGI

April 16, 2024
IGI Report No LG630455773
EMERALD CUT
7.31 X 4.92 X 3.34 MM
1.23 CARAT
Color Grade F
Clarity Grade VS 1
Depth 50.5%
Table 13.5%
Girdle 64%
Medium
Long
EXCELLENT
EXCELLENT
NONE
IGI LG630455773

Comments: This Laboratory Grown Diamond was created by Chemical Vapor Deposition (CVD) growth process and may include post-growth treatment. Type IIa