



ELECTRONIC COPY

LABORATORY GROWN DIAMOND REPORT

April 20, 2024	
IGI Report Number	LG630459568
Description	LABORATORY GROWN DIAMOND
Shape and Cutting Style	ROUND BRILLIANT
Measurements	11.06 - 11.10 X 6.83 MM

GRADING RESULTS

Carat Weight	5.14 CARATS
Color Grade	F
Clarity Grade	VVS 2
Cut Grade	IDEAL

ADDITIONAL GRADING INFORMATION

Polish	EXCELLENT
Symmetry	EXCELLENT
Fluorescence	NONE
Inscription(s)	 LG630459568

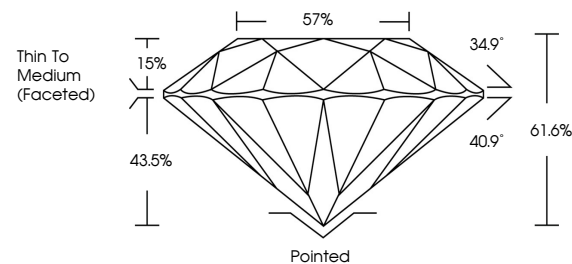
Comments: This Laboratory Grown Diamond was created by Chemical Vapor Deposition (CVD) growth process and may include post-growth treatment.
Type IIa

LABORATORY GROWN DIAMOND REPORT

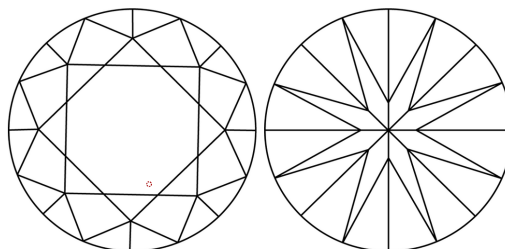
LG630459568

Report verification at igi.org

PROPORTIONS



CLARITY CHARACTERISTICS



KEY TO SYMBOLS

Red symbols indicate internal characteristics.
Green symbols indicate external characteristics.

LABORATORY GROWN
DIAMOND REPORT

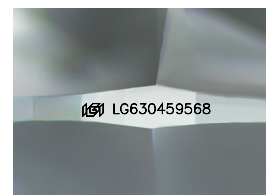
GRADING SCALES

CLARITY

IF	VVS ¹⁻²	VS ¹⁻²	SI ¹⁻²	I ¹⁻³
Internally Flawless	Very Very Slightly Included	Very Slightly Included	Slightly Included	Included

COLOR

D E F G H I J Faint Very Light Light



Sample Image Used



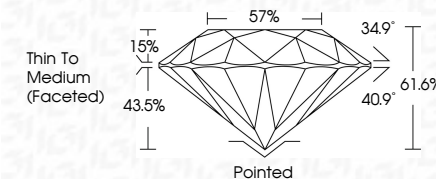
© IGI 2020, International Gemological Institute

FD - 10 20

LABORATORY GROWN DIAMOND REPORT

April 20, 2024	
IGI Report Number	LG630459568
Description	LABORATORY GROWN DIAMOND
Shape and Cutting Style	ROUND BRILLIANT
Measurements	11.06 - 11.10 X 6.83 MM

GRADING RESULTS	
Carat Weight	5.14 CARATS
Color Grade	F
Clarity Grade	VVS 2
Cut Grade	IDEAL



ADDITIONAL GRADING INFORMATION

Polish	EXCELLENT
Symmetry	EXCELLENT
Fluorescence	NONE
Inscription(s)	(15) LG630459568

Comments: This Laboratory Grown Diamond was created by Chemical Vapor Deposition (CVD) growth process and may include post-growth treatment.
Type IIa



April 20, 2024	5.14 CARATS	WGS 2	Portited	Quiet	Comments:
G Report No. LG30049568	IDEAL	61.6%	EXCELLENT	Polish	Grown Diamond was created by Chemical Vapor Deposition (CVD) growth process and may include post-growth treatment.
ROUND BRILLIANT	57%	Thin to Medium (Faceted)	EXCELLENT	Symmetry	type IIG
11.06 x 11.10 x 6.83 MM			NONE	Fluorescence	
Carat Weight				Inscriptions(s)	
Color Grade					
Clarity Grade					
Cut Grade					
Depth					
Table					
Girdle					