



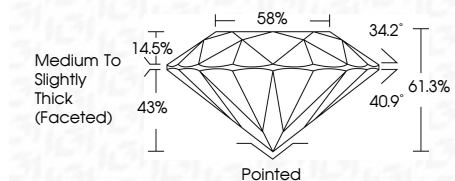
ELECTRONIC COPY

LG630461912
Report verification at igi.org



May 9, 2024
IGI Report Number: LG630461912
Description: LABORATORY GROWN DIAMOND
Shape and Cutting Style: ROUND BRILLIANT
Measurements: 7.17 - 7.22 X 4.42 MM

GRADING RESULTS
Carat Weight: 1.41 CARAT
Color Grade: E
Clarity Grade: VVS 2
Cut Grade: IDEAL



ADDITIONAL GRADING INFORMATION
Polish: EXCELLENT
Symmetry: EXCELLENT
Fluorescence: NONE
Inscription(s): IGI LG630461912
Comments: As Grown - No indication of post-growth treatment. This Laboratory Grown Diamond was created by High Pressure High Temperature (HPHT) growth process. Type II



May 9, 2024
IGI Report No. LG630461912
ROUND BRILLIANT
7.17 - 7.22 X 4.42 MM
1.41 CARAT
E
VVS 2
IDEAL
61.3%
58%
Medium To Slightly Thick (Faceted)
Pointed
EXCELLENT
EXCELLENT
NONE
IGI LG630461912
Comments: As Grown - No indication of post-growth treatment. This Laboratory Grown Diamond was created by High Pressure High Temperature (HPHT) growth process. Type II

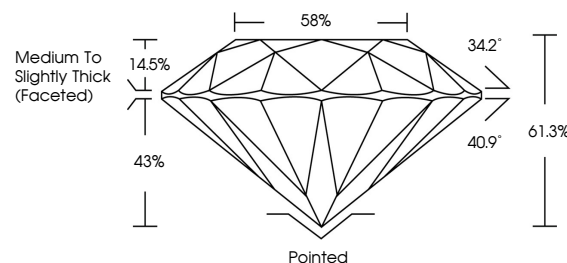
May 9, 2024
IGI Report Number: LG630461912
Description: LABORATORY GROWN DIAMOND
Shape and Cutting Style: ROUND BRILLIANT
Measurements: 7.17 - 7.22 X 4.42 MM

GRADING RESULTS
Carat Weight: 1.41 CARAT
Color Grade: E
Clarity Grade: VVS 2
Cut Grade: IDEAL

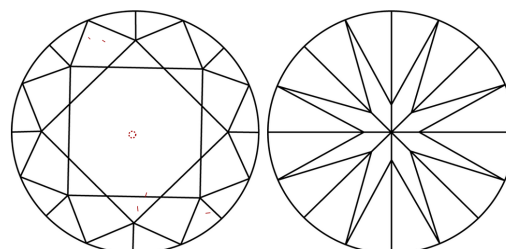
ADDITIONAL GRADING INFORMATION
Polish: EXCELLENT
Symmetry: EXCELLENT
Fluorescence: NONE
Inscription(s): IGI LG630461912

Comments: As Grown - No indication of post-growth treatment. This Laboratory Grown Diamond was created by High Pressure High Temperature (HPHT) growth process. Type II

PROPORTIONS

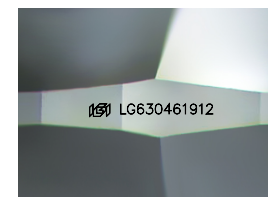


CLARITY CHARACTERISTICS



KEY TO SYMBOLS

Red symbols indicate internal characteristics. Green symbols indicate external characteristics.



Sample Image Used

COLOR

D E F G H I J Faint Very Light Light

CLARITY

IF VVS 1-2 VS 1-2 SI 1-2 I 1-3
Internally Flawless Very Very Slightly Included Very Slightly Included Slightly Included Included

