



ELECTRONIC COPY

LABORATORY GROWN DIAMOND REPORT

LG631404067

Report verification at igi.org

LABORATORY GROWN
DIAMOND REPORT

LABORATORY GROWN DIAMOND REPORT

LABORATORY GROWN DIAMOND REPORT

April 17, 2024
IGI Report Number **LG631404067**
Description **LABORATORY GROWN
DIAMOND**
Shape and Cutting Style **CUSHION BRILLIANT**
Measurements **11.86 X 8.07 X 5.16 MM**

GRADING RESULTS

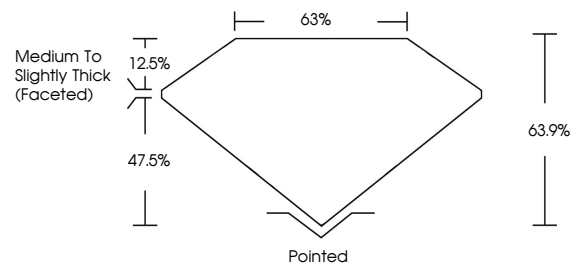
Carat Weight **4.06 CARATS**
Color Grade **D**
Clarity Grade **VS 1**

ADDITIONAL GRADING INFORMATION

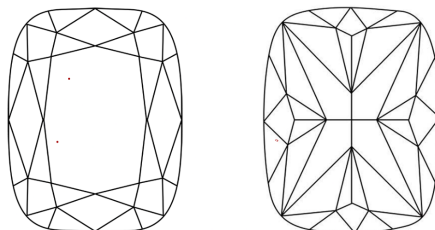
Polish **EXCELLENT**
Symmetry **EXCELLENT**
Fluorescence **NONE**
Inscription(s) **IGI LG631404067**

Comments: This Laboratory Grown Diamond was created by Chemical Vapor Deposition (CVD) growth process and may include post-growth treatment. Type IIa

PROPORTIONS



CLARITY CHARACTERISTICS



KEY TO SYMBOLS

Red symbols indicate internal characteristics.
Green symbols indicate external characteristics.

GRADING SCALES

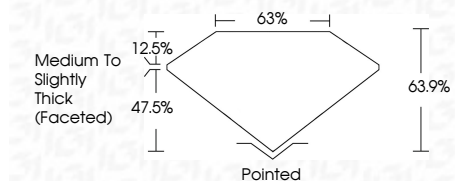
CLARITY

IF	VVS ¹⁻²	VS ¹⁻²	SI ¹⁻²	I ¹⁻³
Internally Flawless	Very Very Slightly Included	Very Slightly Included	Slightly Included	Included

COLOR

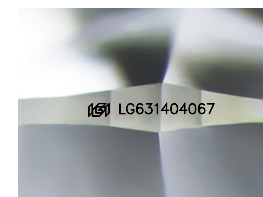
D	E	F	G	H	I	J	Faint	Very Light	Light
---	---	---	---	---	---	---	-------	------------	-------

April 17, 2024
IGI Report Number **LG631404067**
Description **LABORATORY GROWN
DIAMOND**
Shape and Cutting Style **CUSHION BRILLIANT**
Measurements **11.86 X 8.07 X 5.16 MM**
GRADING RESULTS
Carat Weight **4.06 CARATS**
Color Grade **D**
Clarity Grade **VS 1**



ADDITIONAL GRADING INFORMATION

Polish **EXCELLENT**
Symmetry **EXCELLENT**
Fluorescence **NONE**
Inscription(s) **IGI LG631404067**
Comments: This Laboratory Grown Diamond was created by Chemical Vapor Deposition (CVD) growth process and may include post-growth treatment. Type IIa



Sample Image Used



IGI

April 17, 2024
IGI Report No LG631404067
CUSHION BRILLIANT
11.86 X 8.07 X 5.16 MM
4.06 CARATS
D
Color Grade
VS 1
63.9%
63%
Medium to Slightly Thick (Faceted)
Pointed
EXCELLENT
EXCELLENT
NONE
IGI LG631404067

Comments: This Laboratory Grown Diamond was created by Chemical Vapor Deposition (CVD) growth process and may include post-growth treatment. Type IIa