



ELECTRONIC COPY

LABORATORY GROWN DIAMOND REPORT

LG631406347

Report verification at igi.org

LABORATORY GROWN DIAMOND REPORT

LABORATORY GROWN DIAMOND REPORT

LABORATORY GROWN DIAMOND REPORT

April 22, 2024
IGI Report Number LG631406347
Description LABORATORY GROWN DIAMOND
Shape and Cutting Style EMERALD CUT
Measurements 8.86 X 6.35 X 4.36 MM

GRADING RESULTS

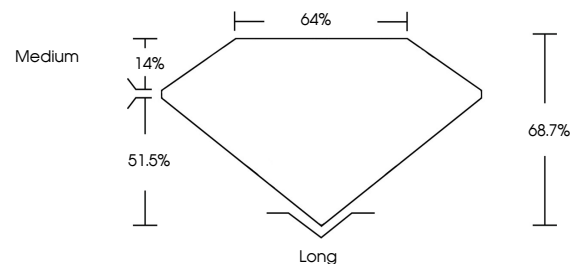
Carat Weight 2.41 CARATS
Color Grade E
Clarity Grade SI 2

ADDITIONAL GRADING INFORMATION

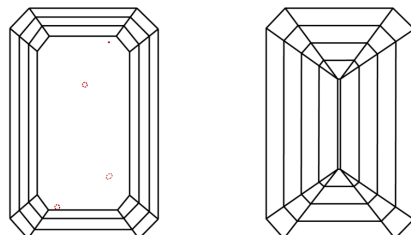
Polish EXCELLENT
Symmetry EXCELLENT
Fluorescence NONE
Inscription(s) IGI LG631406347

Comments: This Laboratory Grown Diamond was created by Chemical Vapor Deposition (CVD) growth process and may include post-growth treatment. Type IIa

PROPORTIONS



CLARITY CHARACTERISTICS



KEY TO SYMBOLS

Red symbols indicate internal characteristics.
Green symbols indicate external characteristics.

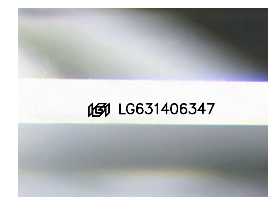
GRADING SCALES

CLARITY

Table showing clarity scales: IF, VVS 1-2, VS 1-2, SI 1-2, I 1-3. Below the scale, corresponding clarity grades are listed: Internally Flawless, Very Very Slightly Included, Very Slightly Included, Slightly Included, Included.

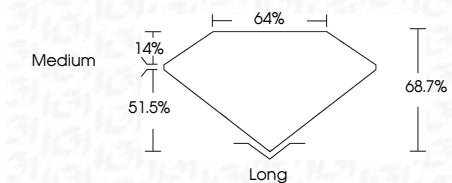
COLOR

Table showing color scales: D, E, F, G, H, I, J, Faint, Very Light, Light.



Sample Image Used

April 22, 2024
IGI Report Number LG631406347
Description LABORATORY GROWN DIAMOND
Shape and Cutting Style EMERALD CUT
Measurements 8.86 X 6.35 X 4.36 MM
GRADING RESULTS
Carat Weight 2.41 CARATS
Color Grade E
Clarity Grade SI 2



ADDITIONAL GRADING INFORMATION

Polish EXCELLENT
Symmetry EXCELLENT
Fluorescence NONE
Inscription(s) IGI LG631406347
Comments: This Laboratory Grown Diamond was created by Chemical Vapor Deposition (CVD) growth process and may include post-growth treatment. Type IIa



Summary of report details including date, report number, measurements, grading results, and additional information. Includes a QR code and a small IGI logo.

Comments: This Laboratory Grown Diamond was created by Chemical Vapor Deposition (CVD) growth process and may include post-growth treatment. Type IIa