



ELECTRONIC COPY

LG631419528

Report verification at igi.org

LABORATORY GROWN DIAMOND REPORT

April 18, 2024
 IGI Report Number **LG631419528**
 Description **LABORATORY GROWN
DIAMOND**
 Shape and Cutting Style **ROUND BRILLIANT**
 Measurements **8.81 - 8.84 X 5.18 MM**

GRADING RESULTS

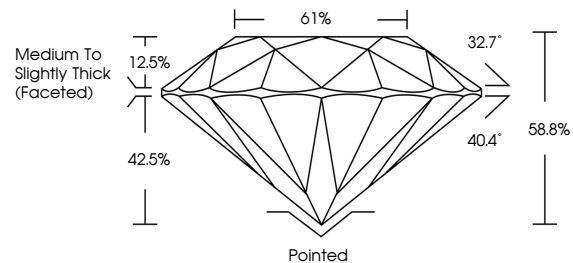
Carat Weight **2.51 CARATS**
 Color Grade **F**
 Clarity Grade **SI 2**
 Cut Grade **EXCELLENT**

ADDITIONAL GRADING INFORMATION

Polish **EXCELLENT**
 Symmetry **EXCELLENT**
 Fluorescence **NONE**
 Inscription(s) **IGI LG631419528**

Comments: This Laboratory Grown Diamond was created by Chemical Vapor Deposition (CVD) growth process and may include post-growth treatment. Type IIa

PROPORTIONS



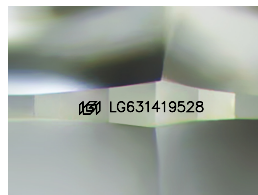
GRADING SCALES

CLARITY

IF	VVS ¹⁻²	VS ¹⁻²	SI ¹⁻²	I ¹⁻³
Internally Flawless	Very Very Slightly Included	Very Slightly Included	Slightly Included	Included

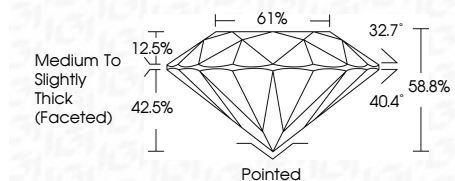
COLOR

D	E	F	G	H	I	J	Faint	Very Light	Light
---	---	---	---	---	---	---	-------	------------	-------



Sample Image Used

April 18, 2024
 IGI Report Number **LG631419528**
 Description **LABORATORY GROWN
DIAMOND**
 Shape and Cutting Style **ROUND BRILLIANT**
 Measurements **8.81 - 8.84 X 5.18 MM**
GRADING RESULTS
 Carat Weight **2.51 CARATS**
 Color Grade **F**
 Clarity Grade **SI 2**
 Cut Grade **EXCELLENT**



ADDITIONAL GRADING INFORMATION

Polish **EXCELLENT**
 Symmetry **EXCELLENT**
 Fluorescence **NONE**
 Inscription(s) **IGI LG631419528**
 Comments: This Laboratory Grown Diamond was created by Chemical Vapor Deposition (CVD) growth process and may include post-growth treatment. Type IIa



IGI



April 18, 2024
 IGI Report No LG631419528
ROUND BRILLIANT
8.81 - 8.84 X 5.18 MM
 Carat Weight **2.51 CARATS**
 Color Grade **F**
 Clarity Grade **SI 2**
 Cut Grade **EXCELLENT**
 Depth **58.8%**
 Table **12.5%**
 Girdle **42.5%**
 Pavilion Angle **40.4°**
 Crown Angle **32.7°**
 Culet **Pointed**
 Polish **EXCELLENT**
 Symmetry **EXCELLENT**
 Fluorescence **NONE**
 Inscription(s) **IGI LG631419528**

Comments: This Laboratory Grown Diamond was created by Chemical Vapor Deposition (CVD) growth process and may include post-growth treatment. Type IIa