



ELECTRONIC COPY

LG631451911

Report verification at igi.org

LABORATORY GROWN DIAMOND REPORT

April 22, 2024
IGI Report Number **LG631451911**
Description **LABORATORY GROWN
DIAMOND**
Shape and Cutting Style **ROUND BRILLIANT**
Measurements **8.23 - 8.28 X 5.13 MM**

GRADING RESULTS

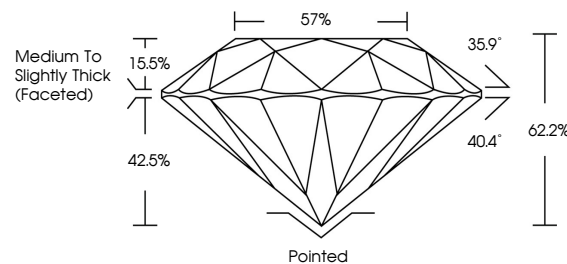
Carat Weight **2.19 CARATS**
Color Grade **E**
Clarity Grade **VS 1**
Cut Grade **IDEAL**

ADDITIONAL GRADING INFORMATION

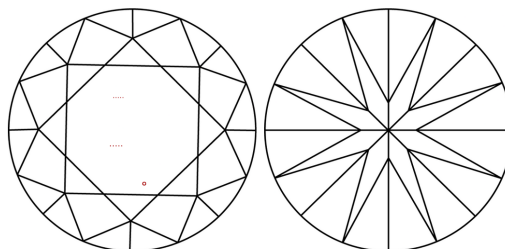
Polish **EXCELLENT**
Symmetry **EXCELLENT**
Fluorescence **NONE**
Inscription(s) **IGI LG631451911**

Comments: This Laboratory Grown Diamond was created by Chemical Vapor Deposition (CVD) growth process and may include post-growth treatment. Type IIa

PROPORTIONS



CLARITY CHARACTERISTICS



KEY TO SYMBOLS

Red symbols indicate internal characteristics.
Green symbols indicate external characteristics.

GRADING SCALES

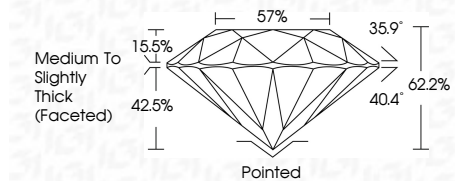
CLARITY

IF	VVS ¹⁻²	VS ¹⁻²	SI ¹⁻²	I ¹⁻³
Internally Flawless	Very Very Slightly Included	Very Slightly Included	Slightly Included	Included

COLOR

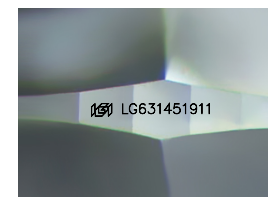
D	E	F	G	H	I	J	Faint	Very Light	Light
---	---	---	---	---	---	---	-------	------------	-------

April 22, 2024
IGI Report Number **LG631451911**
Description **LABORATORY GROWN
DIAMOND**
Shape and Cutting Style **ROUND BRILLIANT**
Measurements **8.23 - 8.28 X 5.13 MM**
GRADING RESULTS
Carat Weight **2.19 CARATS**
Color Grade **E**
Clarity Grade **VS 1**
Cut Grade **IDEAL**



ADDITIONAL GRADING INFORMATION

Polish **EXCELLENT**
Symmetry **EXCELLENT**
Fluorescence **NONE**
Inscription(s) **IGI LG631451911**
Comments: This Laboratory Grown Diamond was created by Chemical Vapor Deposition (CVD) growth process and may include post-growth treatment. Type IIa



Sample Image Used



IGI

April 22, 2024
IGI Report No LG631451911
ROUND BRILLIANT
8.23 - 8.28 X 5.13 MM
2.19 CARATS
E
VS 1
IDEAL
62.2%
57%
Medium To Slightly Thick (Faceted)
Pointed
EXCELLENT
EXCELLENT
NONE
IGI LG631451911
Comments: This Laboratory Grown Diamond was created by Chemical Vapor Deposition (CVD) growth process and may include post-growth treatment. Type IIa