



ELECTRONIC COPY

LABORATORY GROWN DIAMOND REPORT

LG631457238

Report verification at igi.org

LABORATORY GROWN DIAMOND REPORT

LABORATORY GROWN DIAMOND REPORT

LABORATORY GROWN DIAMOND REPORT

April 28, 2024
IGI Report Number LG631457238
Description LABORATORY GROWN DIAMOND
Shape and Cutting Style ROUND BRILLIANT
Measurements 7.96 - 7.99 X 4.91 MM

GRADING RESULTS

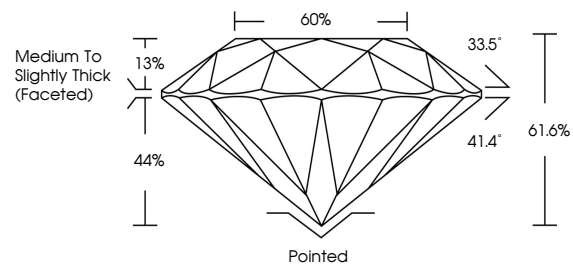
Carat Weight 1.96 CARAT
Color Grade G
Clarity Grade SI 1
Cut Grade EXCELLENT

ADDITIONAL GRADING INFORMATION

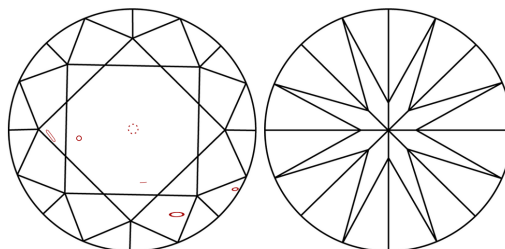
Polish EXCELLENT
Symmetry EXCELLENT
Fluorescence NONE
Inscription(s) IGI LG631457238

Comments: This Laboratory Grown Diamond was created by Chemical Vapor Deposition (CVD) growth process and may include post-growth treatment. Type IIa

PROPORTIONS



CLARITY CHARACTERISTICS



KEY TO SYMBOLS

Red symbols indicate internal characteristics.
Green symbols indicate external characteristics.

GRADING SCALES

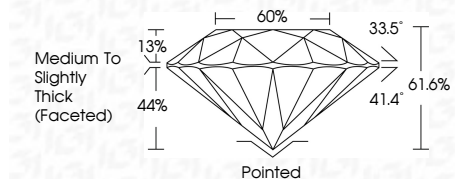
CLARITY

Table mapping clarity grades (IF, VVS, VS, SI, I) to descriptions (Internally Flawless, Very Very Slightly Included, etc.)

COLOR

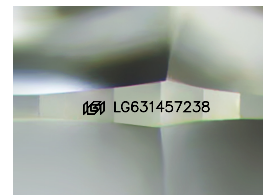
Table mapping color grades (D, E, F, G, H, I, J) to descriptions (Faint, Very Light, Light)

April 28, 2024
IGI Report Number LG631457238
Description LABORATORY GROWN DIAMOND
Shape and Cutting Style ROUND BRILLIANT
Measurements 7.96 - 7.99 X 4.91 MM
GRADING RESULTS
Carat Weight 1.96 CARAT
Color Grade G
Clarity Grade SI 1
Cut Grade EXCELLENT



ADDITIONAL GRADING INFORMATION

Polish EXCELLENT
Symmetry EXCELLENT
Fluorescence NONE
Inscription(s) IGI LG631457238
Comments: This Laboratory Grown Diamond was created by Chemical Vapor Deposition (CVD) growth process and may include post-growth treatment. Type IIa



Sample Image Used



IGI

April 28, 2024
IGI Report No LG631457238
ROUND BRILLIANT
7.96 - 7.99 X 4.91 MM
1.96 CARAT
Color Grade G
Clarity Grade SI 1
Depth 61.6%
Table 60%
Medium To Slightly Thick (Faceted)
Cutler Pointed
Polish EXCELLENT
Symmetry EXCELLENT
Fluorescence NONE
Inscriptions(s) IGI LG631457238
Comments: This Laboratory Grown Diamond was created by Chemical Vapor Deposition (CVD) growth process and may include post-growth treatment. Type IIa