



**INTERNATIONAL
GEMOLOGICAL
INSTITUTE**

ELECTRONIC COPY

LABORATORY GROWN DIAMOND REPORT

April 22, 2024	
IGI Report Number	LG631458939
Description	LABORATORY GROWN DIAMOND
Shape and Cutting Style	OVAL BRILLIANT
Measurements	8.46 X 5.80 X 3.62 MM

GRADING RESULTS

Carat Weight	1.11 CARAT
Color Grade	D
Clarity Grade	VVS 2

ADDITIONAL GRADING INFORMATION

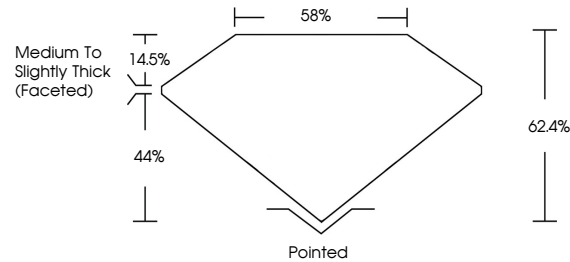
Polish	EXCELLENT
Symmetry	EXCELLENT
Fluorescence	NONE
Inscription(s)	 LG631458939

Comments: This Laboratory Grown Diamond was created by Chemical Vapor Deposition (CVD) growth process and may include post-growth treatment.
Type IIa

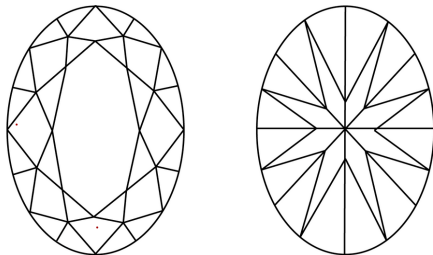
LABORATORY GROWN DIAMOND REPORT

LG631458939
Report verification at [igi.org](https://www.igi.org)

PROPORTIONS



CLARITY CHARACTERISTICS



KEY TO SYMBOLS

Red symbols indicate internal characteristics.
Green symbols indicate external characteristics.

LABORATORY GROWN
DIAMOND REPORT

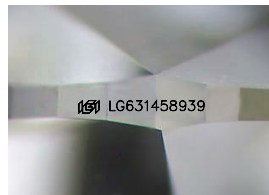
GRADING SCALES

CLARITY

IF	VVS ¹⁻²	VS ¹⁻²	SI ¹⁻²	I ¹⁻³
Internally Flawless	Very Very Slightly Included	Very Slightly Included	Slightly Included	Included

COLOR

D E F G H I J Faint Very Light Light



Sample Image Used

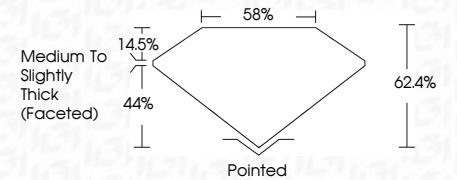


© IGI 2020, International Gemological Institute


FD - 10 20

LABORATORY GROWN DIAMOND REPORT

April 22, 2024	
IGI Report Number	LG631458939
Description	LABORATORY GROWN DIAMOND
Shape and Cutting Style	OVAL BRILLIANT
Measurements	8.46 X 5.80 X 3.62 MM
GRADING RESULTS	
Carat Weight	1.11 CARAT
Color Grade	D
Clarity Grade	VVS 2



ADDITIONAL GRADING INFORMATION

Polish	EXCELLENT
Symmetry	EXCELLENT
Fluorescence	NONE
Inscription(s)	 LG631458939
<p>Comments: This Laboratory Grown Diamond was created by Chemical Vapor Deposition (CVD) growth process and may include post-growth treatment.</p> <p>Type IIa</p>	



IGI

April 22, 2024	Carat Weight	1.11 CARAT
IGI Report No. LG53 1459599	Color Grade	D
IGI Report No. LG53 1459599	Clarity Grade	VVS 2
IGI Report No. LG53 1459599	Depth	62.4%
IGI Report No. LG53 1459599	Table	55%
IGI Report No. LG53 1459599	Girdle	Medium to Slightly Thick (faceted)
IGI Report No. LG53 1459599	Culet	Pointed
IGI Report No. LG53 1459599	Polish	EXCELLENT
IGI Report No. LG53 1459599	Symmetry	EXCELLENT
IGI Report No. LG53 1459599	Fluorescence	NONE
IGI Report No. LG53 1459599	Inscription(s)	IGI LG53 1459599

Comments:
This Laboratory Grown Diamond was created by Chemical Vapor Deposition (CVD) growth process and may include post-growth treatment.
Type IIa

www.igi.org