

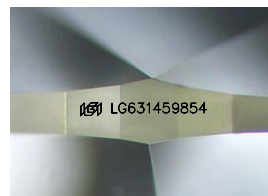
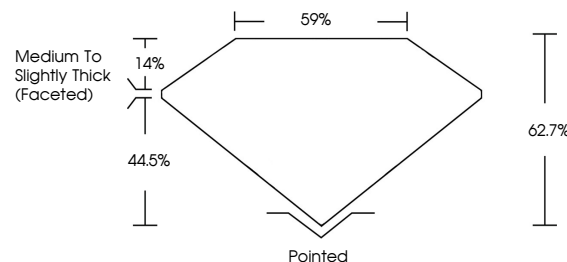


ELECTRONIC COPY

LABORATORY GROWN DIAMOND REPORT

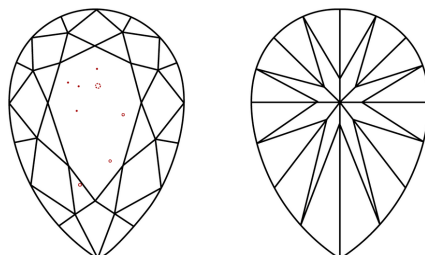
LG631459854
Report verification at lgi.org

PROPORTIONS



Sample Image Used

CLARITY CHARACTERISTICS



KEY TO SYMBOLS

Red symbols indicate internal characteristics.
Green symbols indicate external characteristics.

COLOR



CLARITY



© IGI 2020, International Gemological Institute

FD - 10 20

www.igi.org

DIAMOND REPORT



April 29, 2024

IGI Report Number **LG631459854**Description **LABORATORY GROWN DIAMOND**Shape and Cutting Style **PEAR BRILLIANT**

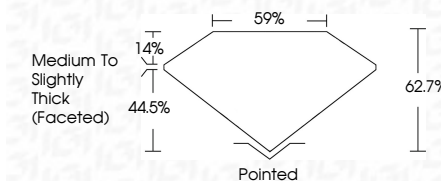
Measurements 9.91 X 5.98 X 3.75 MM

GRADING RESULTS

Carat Weight 1.30 CARAT

Color Grade G

Clarity Grade VS 1



ADDITIONAL GRADING INFORMATION

Polish **EXCELLENT**

Symmetry **EXCELLENT**

Fluorescence **NONE**Inscription(s) LG631459854

Comments: This Laboratory Grown Diamond was created by Chemical Vapor Deposition (CVD) growth process and may include post-growth treatment.
Type IIa



April 29, 2024
GI Report No LG631459854
PEAR BRILLIANT

5.91 X 5.98 X 3.75 MM	1.30 CARAT	G
Color Grade	VS 1	62.7%
Clarity Grade	VS 1	59%
Depth	Medium To Slightly Thick (rounded)	
Table	Pointed	
Girdle	EXCELLENT	
Polish	EXCELLENT	
Symmetry	NONE	
Fluorescence	NONE	
Comments	1.30 CARAT, rounded	

Comments:
This Laboratory Grown Diamond was created by Chemical Vapor Deposition (CVD) growth process and may include post-growth treatment.