



ELECTRONIC COPY

LABORATORY GROWN DIAMOND REPORT

LG631460938

Report verification at igi.org

**LABORATORY GROWN
DIAMOND REPORT**

LABORATORY GROWN DIAMOND REPORT

LABORATORY GROWN DIAMOND REPORT

April 21, 2024
 IGI Report Number **LG631460938**
 Description **LABORATORY GROWN
DIAMOND**
 Shape and Cutting Style **ROUND BRILLIANT**
 Measurements **7.85 - 7.90 X 4.89 MM**

GRADING RESULTS

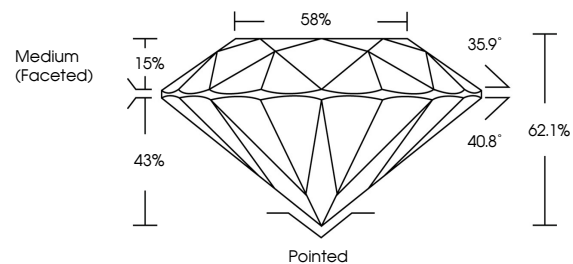
Carat Weight **1.89 CARAT**
 Color Grade **E**
 Clarity Grade **VS 1**
 Cut Grade **IDEAL**

ADDITIONAL GRADING INFORMATION

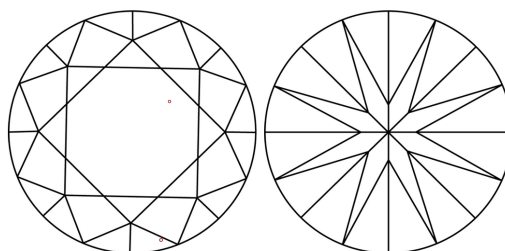
Polish **EXCELLENT**
 Symmetry **EXCELLENT**
 Fluorescence **NONE**
 Inscription(s) **IGI LG631460938**

Comments: This Laboratory Grown Diamond was created by Chemical Vapor Deposition (CVD) growth process and may include post-growth treatment. Type IIa

PROPORTIONS



CLARITY CHARACTERISTICS



KEY TO SYMBOLS

Red symbols indicate internal characteristics.
 Green symbols indicate external characteristics.

GRADING SCALES

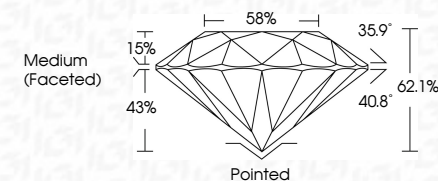
CLARITY

IF	VVS ¹⁻²	VS ¹⁻²	SI ¹⁻²	I ¹⁻³
Internally Flawless	Very Very Slightly Included	Very Slightly Included	Slightly Included	Included

COLOR

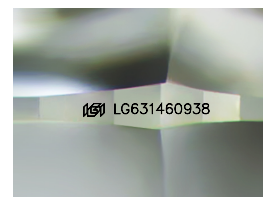
D	E	F	G	H	I	J	Faint	Very Light	Light
---	---	---	---	---	---	---	-------	------------	-------

April 21, 2024
 IGI Report Number **LG631460938**
 Description **LABORATORY GROWN
DIAMOND**
 Shape and Cutting Style **ROUND BRILLIANT**
 Measurements **7.85 - 7.90 X 4.89 MM**
GRADING RESULTS
 Carat Weight **1.89 CARAT**
 Color Grade **E**
 Clarity Grade **VS 1**
 Cut Grade **IDEAL**



ADDITIONAL GRADING INFORMATION

Polish **EXCELLENT**
 Symmetry **EXCELLENT**
 Fluorescence **NONE**
 Inscription(s) **IGI LG631460938**
 Comments: This Laboratory Grown Diamond was created by Chemical Vapor Deposition (CVD) growth process and may include post-growth treatment. Type IIa



Sample Image Used



April 21, 2024	IGI Report No LG631460938	ROUND BRILLIANT	7.85 - 7.90 X 4.89 MM	1.89 CARAT	E	VS 1	IDEAL	62.1%	58%	Medium (Faceted)	Pointed	EXCELLENT	EXCELLENT	NONE	IGI LG631460938
IGI															

Comments: This Laboratory Grown Diamond was created by Chemical Vapor Deposition (CVD) growth process and may include post-growth treatment. Type IIa