



ELECTRONIC COPY

LG631461239
Report verification at igi.org

LABORATORY GROWN DIAMOND REPORT

April 29, 2024
IGI Report Number **LG631461239**
Description **LABORATORY GROWN DIAMOND**
Shape and Cutting Style **EMERALD CUT**
Measurements **8.66 X 6.03 X 4.19 MM**

GRADING RESULTS

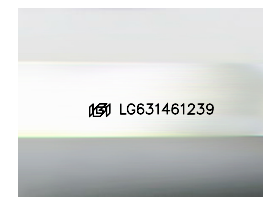
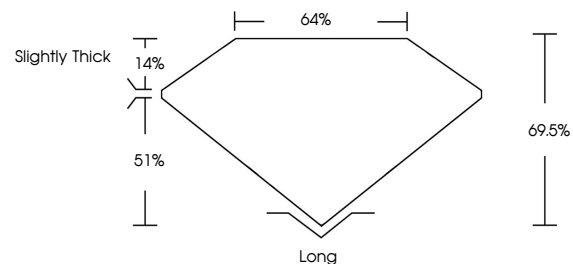
Carat Weight **2.14 CARATS**
Color Grade **H**
Clarity Grade **VS 2**

ADDITIONAL GRADING INFORMATION

Polish **EXCELLENT**
Symmetry **EXCELLENT**
Fluorescence **NONE**
Inscription(s) **LG631461239**

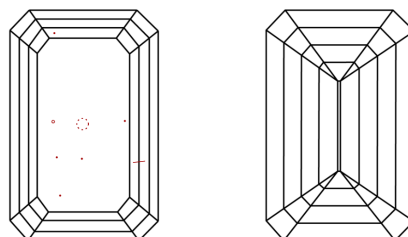
Comments: This Laboratory Grown Diamond was created by Chemical Vapor Deposition (CVD) growth process and may include post-growth treatment. Type IIa

PROPORTIONS



Sample Image Used

CLARITY CHARACTERISTICS



KEY TO SYMBOLS

Red symbols indicate internal characteristics.
Green symbols indicate external characteristics.

COLOR

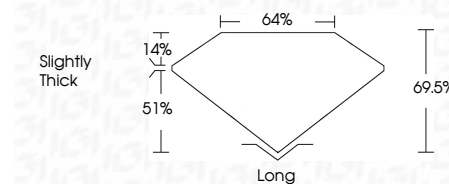
D E F G H I J Faint Very Light Light

CLARITY

IF	VS ¹⁻²	VS ¹⁻²	SI ¹⁻²	I ¹⁻³
Internally Flawless	Very Very Slightly Included	Very Slightly Included	Slightly Included	Included



April 29, 2024
IGI Report Number **LG631461239**
Description **LABORATORY GROWN DIAMOND**
Shape and Cutting Style **EMERALD CUT**
Measurements **8.66 X 6.03 X 4.19 MM**
GRADING RESULTS
Carat Weight **2.14 CARATS**
Color Grade **H**
Clarity Grade **VS 2**



ADDITIONAL GRADING INFORMATION

Polish **EXCELLENT**
Symmetry **EXCELLENT**
Fluorescence **NONE**
Inscription(s) **LG631461239**
Comments: This Laboratory Grown Diamond was created by Chemical Vapor Deposition (CVD) growth process and may include post-growth treatment. Type IIa



IGI

April 29, 2024
IGI Report No. **LG631461239**
EMERALD CUT
8.66 X 6.03 X 4.19 MM
Carat Weight **2.14 CARATS**
Color Grade **H**
Clarity Grade **VS 2**
Depth **69.5%**
Table **64%**
Girdle **Slightly Thick**
Culet **Long**
Polish **EXCELLENT**
Symmetry **EXCELLENT**
Fluorescence **NONE**
Inscription(s) **LG631461239**

Comments: This Laboratory Grown Diamond was created by Chemical Vapor Deposition (CVD) growth process and may include post-growth treatment. Type IIa