



**INTERNATIONAL  
GEMOLOGICAL  
INSTITUTE**

**LABORATORY GROWN DIAMOND REPORT**

**IGI LABORATORY GROWN DIAMOND IDENTIFICATION REPORT**

April 27, 2024  
 IGI Report Number **LG631467772**  
 Description **LABORATORY GROWN DIAMOND**  
 Shape and Cutting Style **ROUND BRILLIANT**  
 Measurements **5.60 - 5.64 X 3.58 MM**

**GRADING RESULTS**

Carat Weight **0.70 CARAT**  
 Color Grade **D**  
 Clarity Grade **VVS 1**  
 Cut Grade **VERY GOOD**

**ADDITIONAL GRADING INFORMATION**

Polish **EXCELLENT**  
 Symmetry **EXCELLENT**  
 Fluorescence **NONE**  
 Inscription(s) **IGI LG631467772**

Comments: As Grown - No indication of post-growth treatment. This Laboratory Grown Diamond was created by High Pressure High Temperature (HPHT) growth process. Type II

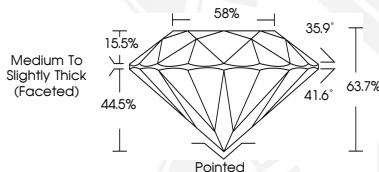
**ELECTRONIC COPY**

**LABORATORY GROWN  
DIAMOND REPORT**

**LG631467772**



Sample Image Used



**IGI LABORATORY GROWN  
DIAMOND ID REPORT**

April 27, 2024  
 IGI Report Number **LG631467772**  
**ROUND BRILLIANT**  
**5.60 - 5.64 X 3.58 MM**  
 Carat Weight **0.70 CARAT**  
 Color Grade **D**  
 Clarity Grade **VVS 1**  
 Cut Grade **VERY GOOD**  
 Polish **EXCELLENT**  
 Symmetry **EXCELLENT**  
 Fluorescence **NONE**  
 Inscription(s) **IGI LG631467772**

Comments: As Grown - No indication of post-growth treatment. This Laboratory Grown Diamond was created by High Pressure High Temperature (HPHT) growth process. Type II

**IGI LABORATORY GROWN  
DIAMOND ID REPORT**

April 27, 2024  
 IGI Report Number **LG631467772**  
**ROUND BRILLIANT**  
**5.60 - 5.64 X 3.58 MM**  
 Carat Weight **0.70 CARAT**  
 Color Grade **D**  
 Clarity Grade **VVS 1**  
 Cut Grade **VERY GOOD**  
 Polish **EXCELLENT**  
 Symmetry **EXCELLENT**  
 Fluorescence **NONE**  
 Inscription(s) **IGI LG631467772**

Comments: As Grown - No indication of post-growth treatment. This Laboratory Grown Diamond was created by High Pressure High Temperature (HPHT) growth process. Type II

THIS DOCUMENT WAS PRODUCED WITH THE FOLLOWING SECURITY MEASURES: SPECIAL DOCUMENT PAPER, INK SCREENS, WATERMARK, BACKGROUND DESIGN, HOLOGRAM AND OTHER SECURITY FEATURES NOT LISTED AND DO EXCEED DOCUMENT SECURITY INDUSTRY GUIDELINES.

For terms & conditions and to verify this report, please visit [www.igi.org](http://www.igi.org)