



ELECTRONIC COPY

LG631469572

Report verification at igi.org

LABORATORY GROWN DIAMOND REPORT

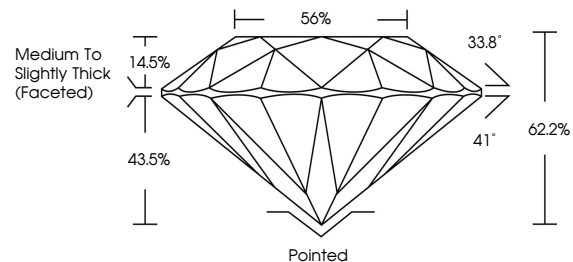
April 17, 2024
 IGI Report Number **LG631469572**
 Description **LABORATORY GROWN
DIAMOND**
 Shape and Cutting Style **ROUND BRILLIANT**
 Measurements **8.09 - 8.12 X 5.04 MM**
GRADING RESULTS
 Carat Weight **2.04 CARATS**
 Color Grade **E**
 Clarity Grade **SI 1**
 Cut Grade **IDEAL**

ADDITIONAL GRADING INFORMATION

Polish **EXCELLENT**
 Symmetry **EXCELLENT**
 Fluorescence **NONE**
 Inscription(s) **IGI LG631469572**

Comments: This Laboratory Grown Diamond was created by Chemical Vapor Deposition (CVD) growth process and may include post-growth treatment. Type IIa

PROPORTIONS



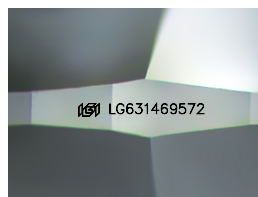
GRADING SCALES

CLARITY

IF	VVS ¹⁻²	VS ¹⁻²	SI ¹⁻²	I ¹⁻³
Internally Flawless	Very Very Slightly Included	Very Slightly Included	Slightly Included	Included

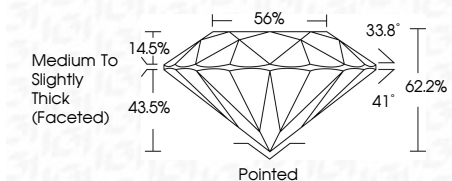
COLOR

D	E	F	G	H	I	J	Faint	Very Light	Light
---	---	---	---	---	---	---	-------	------------	-------



Sample Image Used

April 17, 2024
 IGI Report Number **LG631469572**
 Description **LABORATORY GROWN
DIAMOND**
 Shape and Cutting Style **ROUND BRILLIANT**
 Measurements **8.09 - 8.12 X 5.04 MM**
GRADING RESULTS
 Carat Weight **2.04 CARATS**
 Color Grade **E**
 Clarity Grade **SI 1**
 Cut Grade **IDEAL**



ADDITIONAL GRADING INFORMATION

Polish **EXCELLENT**
 Symmetry **EXCELLENT**
 Fluorescence **NONE**
 Inscription(s) **IGI LG631469572**
 Comments: This Laboratory Grown Diamond was created by Chemical Vapor Deposition (CVD) growth process and may include post-growth treatment. Type IIa



IGI



April 17, 2024
 IGI Report No LG631469572
ROUND BRILLIANT
 8.09 - 8.12 X 5.04 MM
 Carat Weight **2.04 CARATS**
 Color Grade **E**
 Clarity Grade **SI 1**
 Cut Grade **IDEAL**
 Depth **62.2%**
 Table **56%**
 Girdle **Medium To Slightly Thick (Faceted)**
 Culet **Pointed**
 Polish **EXCELLENT**
 Symmetry **EXCELLENT**
 Fluorescence **NONE**
 Inscription(s) **IGI LG631469572**
 Comments: This Laboratory Grown Diamond was created by Chemical Vapor Deposition (CVD) growth process and may include post-growth treatment. Type IIa