



ELECTRONIC COPY

LABORATORY GROWN DIAMOND REPORT

LG631469781

Report verification at igi.org

LABORATORY GROWN DIAMOND REPORT

LABORATORY GROWN DIAMOND REPORT

LABORATORY GROWN DIAMOND REPORT

April 18, 2024
IGI Report Number LG631469781
Description LABORATORY GROWN DIAMOND
Shape and Cutting Style ROUND BRILLIANT
Measurements 7.29 - 7.32 X 4.61 MM

GRADING RESULTS

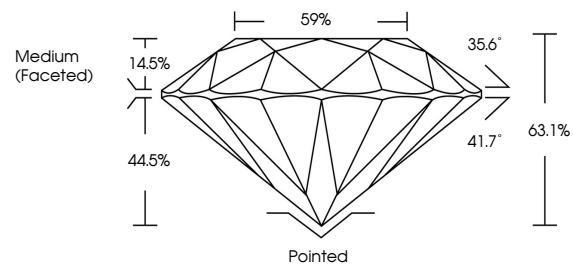
Carat Weight 1.53 CARAT
Color Grade H
Clarity Grade VS 2
Cut Grade EXCELLENT

ADDITIONAL GRADING INFORMATION

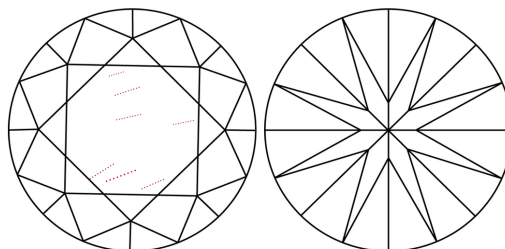
Polish EXCELLENT
Symmetry EXCELLENT
Fluorescence NONE
Inscription(s) IGI LG631469781

Comments: This Laboratory Grown Diamond was created by Chemical Vapor Deposition (CVD) growth process and may include post-growth treatment. Type IIa

PROPORTIONS



CLARITY CHARACTERISTICS



KEY TO SYMBOLS

Red symbols indicate internal characteristics.
Green symbols indicate external characteristics.

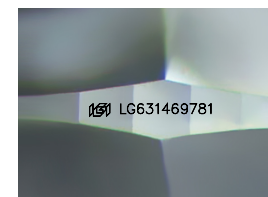
GRADING SCALES

CLARITY

Table mapping clarity grades: IF (Internally Flawless), VVS 1-2 (Very Very Slightly Included), VS 1-2 (Very Slightly Included), SI 1-2 (Slightly Included), I 1-3 (Included).

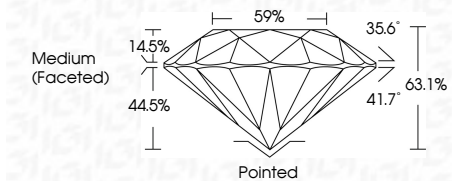
COLOR

Table mapping color grades: D, E, F, G, H, I, J, Faint, Very Light, Light.



Sample Image Used

April 18, 2024
IGI Report Number LG631469781
Description LABORATORY GROWN DIAMOND
Shape and Cutting Style ROUND BRILLIANT
Measurements 7.29 - 7.32 X 4.61 MM
GRADING RESULTS
Carat Weight 1.53 CARAT
Color Grade H
Clarity Grade VS 2
Cut Grade EXCELLENT



ADDITIONAL GRADING INFORMATION

Polish EXCELLENT
Symmetry EXCELLENT
Fluorescence NONE
Inscription(s) IGI LG631469781
Comments: This Laboratory Grown Diamond was created by Chemical Vapor Deposition (CVD) growth process and may include post-growth treatment. Type IIa



IGI

April 18, 2024
IGI Report No LG631469781
ROUND BRILLIANT
7.29 - 7.32 X 4.61 MM
1.53 CARAT
Color Grade H
Clarity Grade VS 2
Depth 63.1%
Table 59%
Girdle Medium (Faceted)
Culet Pointed
Polish EXCELLENT
Symmetry EXCELLENT
Fluorescence NONE
Inscriptions(s) IGI LG631469781
Comments: This Laboratory Grown Diamond was created by Chemical Vapor Deposition (CVD) growth process and may include post-growth treatment. Type IIa

