



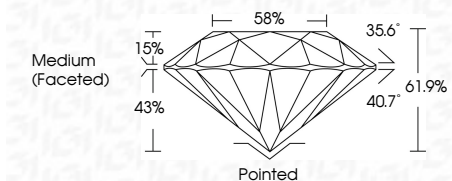
**ELECTRONIC COPY**

LG632401127  
Report verification at igi.org



May 2, 2024  
IGI Report Number **LG632401127**  
Description **LABORATORY GROWN DIAMOND**  
Shape and Cutting Style **ROUND BRILLIANT**  
Measurements **9.03 - 9.12 X 5.62 MM**

**GRADING RESULTS**  
Carat Weight **2.87 CARATS**  
Color Grade **F**  
Clarity Grade **VS 1**  
Cut Grade **IDEAL**



**ADDITIONAL GRADING INFORMATION**  
Polish **EXCELLENT**  
Symmetry **EXCELLENT**  
Fluorescence **NONE**  
Inscription(s) **IGI LG632401127**  
Comments: This Laboratory Grown Diamond was created by Chemical Vapor Deposition (CVD) growth process and may include post-growth treatment. Type IIa



**IGI**

May 2, 2024  
IGI Report No. LG632401127  
**ROUND BRILLIANT**  
9.03 - 9.12 X 5.62 MM  
2.87 CARATS  
F  
VS 1  
IDEAL  
61.9%  
58%  
Medium (Faceted)  
Pointed  
EXCELLENT  
EXCELLENT  
NONE  
IGI LG632401127  
Comments: This Laboratory Grown Diamond was created by Chemical Vapor Deposition (CVD) growth process and may include post-growth treatment. Type IIa

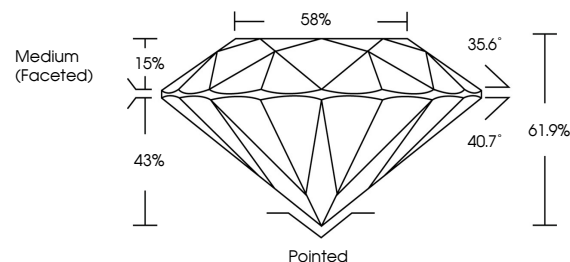
May 2, 2024  
IGI Report Number **LG632401127**  
Description **LABORATORY GROWN DIAMOND**  
Shape and Cutting Style **ROUND BRILLIANT**  
Measurements **9.03 - 9.12 X 5.62 MM**

**GRADING RESULTS**  
Carat Weight **2.87 CARATS**  
Color Grade **F**  
Clarity Grade **VS 1**  
Cut Grade **IDEAL**

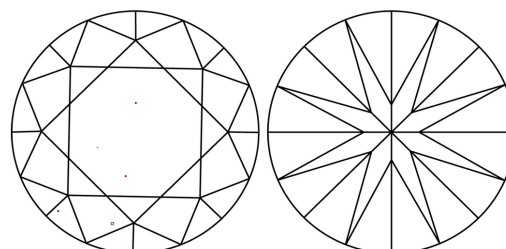
**ADDITIONAL GRADING INFORMATION**  
Polish **EXCELLENT**  
Symmetry **EXCELLENT**  
Fluorescence **NONE**  
Inscription(s) **IGI LG632401127**

Comments: This Laboratory Grown Diamond was created by Chemical Vapor Deposition (CVD) growth process and may include post-growth treatment. Type IIa

**PROPORTIONS**

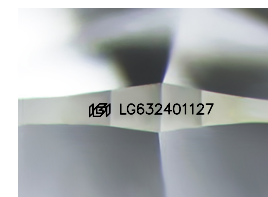


**CLARITY CHARACTERISTICS**



**KEY TO SYMBOLS**

Red symbols indicate internal characteristics.  
Green symbols indicate external characteristics.



Sample Image Used

**COLOR**

D E F G H I J Faint Very Light Light

**CLARITY**

IF	VS <sup>1-2</sup>	VS <sup>1-2</sup>	SI <sup>1-2</sup>	I <sup>1-3</sup>
Internally Flawless	Very Very Slightly Included	Very Slightly Included	Slightly Included	Included

