



ELECTRONIC COPY

LABORATORY GROWN DIAMOND REPORT

May 1, 2024
IGI Report Number LG632401739
Description LABORATORY GROWN DIAMOND
Shape and Cutting Style PRINCESS CUT
Measurements 6.85 X 6.67 X 4.67 MM

GRADING RESULTS

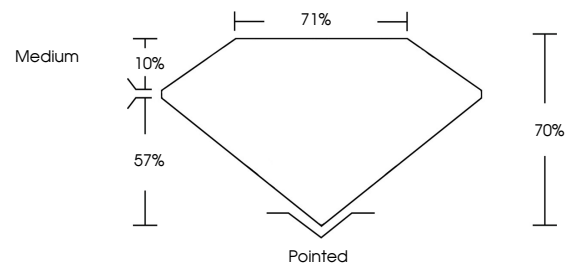
Carat Weight 1.84 CARAT
Color Grade G
Clarity Grade VS 1

ADDITIONAL GRADING INFORMATION

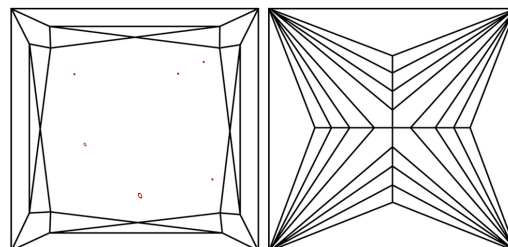
Polish EXCELLENT
Symmetry EXCELLENT
Fluorescence NONE
Inscription(s) IGI LG632401739

Comments: This Laboratory Grown Diamond was created by Chemical Vapor Deposition (CVD) growth process and may include post-growth treatment. Type IIa

PROPORTIONS

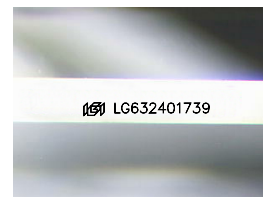


CLARITY CHARACTERISTICS



KEY TO SYMBOLS

Red symbols indicate internal characteristics. Green symbols indicate external characteristics.



Sample Image Used

COLOR

D E F G H I J Faint Very Light Light

CLARITY

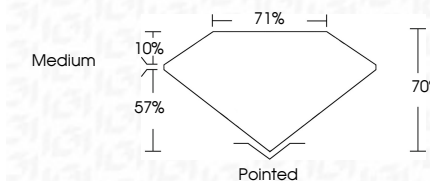
Table mapping clarity grades (IF, VS 1-2, SI 1-2, I 1-3) to descriptions (Internally Flawless, Very Very Slightly Included, Very Slightly Included, Slightly Included, Included).



May 1, 2024
IGI Report Number LG632401739
Description LABORATORY GROWN DIAMOND
Shape and Cutting Style PRINCESS CUT
Measurements 6.85 X 6.67 X 4.67 MM

GRADING RESULTS

Carat Weight 1.84 CARAT
Color Grade G
Clarity Grade VS 1



ADDITIONAL GRADING INFORMATION

Polish EXCELLENT
Symmetry EXCELLENT
Fluorescence NONE
Inscription(s) IGI LG632401739
Comments: This Laboratory Grown Diamond was created by Chemical Vapor Deposition (CVD) growth process and may include post-growth treatment. Type IIa



IGI

May 1, 2024
IGI Report No. LG632401739
PRINCESS CUT
6.85 X 6.67 X 4.67 MM
1.84 CARAT
Color Grade G
Clarity Grade VS 1
Depth 70%
Table 71%
Girdle Medium
Culet Pointed
Polish EXCELLENT
Symmetry EXCELLENT
Fluorescence NONE
Inscription(s) IGI LG632401739

Comments: This Laboratory Grown Diamond was created by Chemical Vapor Deposition (CVD) growth process and may include post-growth treatment. Type IIa