



ELECTRONIC COPY

LG632403759

Report verification at igi.org

LABORATORY GROWN DIAMOND REPORT

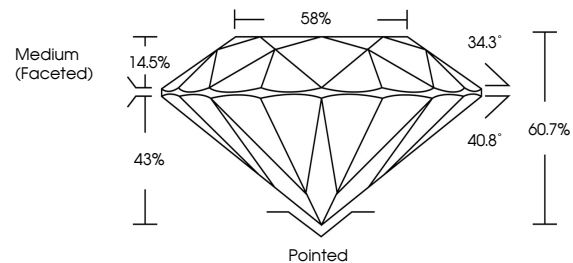
April 25, 2024
IGI Report Number LG632403759
Description LABORATORY GROWN DIAMOND
Shape and Cutting Style ROUND BRILLIANT
Measurements 8.36 - 8.39 X 5.08 MM
GRADING RESULTS
Carat Weight 2.16 CARATS
Color Grade F
Clarity Grade VVS 2
Cut Grade IDEAL

ADDITIONAL GRADING INFORMATION

Polish EXCELLENT
Symmetry EXCELLENT
Fluorescence NONE
Inscription(s) IGI LG632403759

Comments: HEARTS & ARROWS
This Laboratory Grown Diamond was created by Chemical Vapor Deposition (CVD) growth process and may include post-growth treatment.
Type IIa

PROPORTIONS



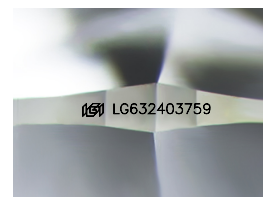
GRADING SCALES

CLARITY

Table with 5 columns: IF, VVS 1-2, VS 1-2, SI 1-2, I 1-3. Rows: Internally Flawless, Very Very Slightly Included, Very Slightly Included, Slightly Included, Included

COLOR

Table with 10 columns: D, E, F, G, H, I, J, Faint, Very Light, Light

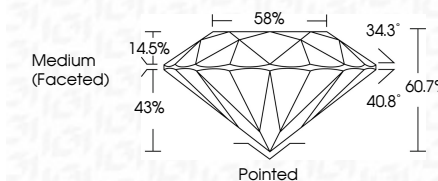


Sample Image Used

April 25, 2024
IGI Report Number LG632403759
Description LABORATORY GROWN DIAMOND
Shape and Cutting Style ROUND BRILLIANT
Measurements 8.36 - 8.39 X 5.08 MM
GRADING RESULTS
Carat Weight 2.16 CARATS
Color Grade F
Clarity Grade VVS 2
Cut Grade IDEAL

ADDITIONAL GRADING INFORMATION

Polish EXCELLENT
Symmetry EXCELLENT
Fluorescence NONE
Inscription(s) IGI LG632403759
Comments: HEARTS & ARROWS
This Laboratory Grown Diamond was created by Chemical Vapor Deposition (CVD) growth process and may include post-growth treatment.
Type IIa



IGI

April 25, 2024
IGI Report No LG632403759
ROUND BRILLIANT
8.36 - 8.39 X 5.08 MM
2.16 CARATS
Color Grade F
Clarity Grade VVS 2
Cut Grade IDEAL
Depth 60.7%
Table 58%
Medium (Faceted)
Culet Pointed
Polish EXCELLENT
Symmetry EXCELLENT
Fluorescence NONE
Inscriptions(s) IGI LG632403759
Comments: HEARTS & ARROWS
This Laboratory Grown Diamond was created by Chemical Vapor Deposition (CVD) growth process and may include post-growth treatment.
Type IIa