



ELECTRONIC COPY

LG632406770
Report verification at igi.org



May 2, 2024
IGI Report Number LG632406770
Description LABORATORY GROWN DIAMOND
Shape and Cutting Style EMERALD CUT
Measurements 11.31 X 8.16 X 5.53 MM

GRADING RESULTS

Carat Weight 5.03 CARATS
Color Grade E
Clarity Grade VS 2

ADDITIONAL GRADING INFORMATION

Polish EXCELLENT
Symmetry EXCELLENT
Fluorescence NONE
Inscription(s) LG632406770
Comments: This Laboratory Grown Diamond was created by Chemical Vapor Deposition (CVD) growth process and may include post-growth treatment. Type IIa

ADDITIONAL GRADING INFORMATION

Polish EXCELLENT
Symmetry EXCELLENT
Fluorescence NONE
Inscription(s) LG632406770
Comments: This Laboratory Grown Diamond was created by Chemical Vapor Deposition (CVD) growth process and may include post-growth treatment. Type IIa



May 2, 2024
IGI Report No. LG632406770
EMERALD CUT
11.31 X 8.16 X 5.53 MM
5.03 CARATS
Color Grade E
Clarity Grade VS 2
Depth 67.8%
Table 72%
Girdle Medium to Slightly Thick
Culet Long
Polish EXCELLENT
Symmetry EXCELLENT
Fluorescence NONE
Inscription(s) LG632406770
Comments: This Laboratory Grown Diamond was created by Chemical Vapor Deposition (CVD) growth process and may include post-growth treatment. Type IIa

LABORATORY GROWN DIAMOND REPORT

May 2, 2024
IGI Report Number LG632406770
Description LABORATORY GROWN DIAMOND
Shape and Cutting Style EMERALD CUT
Measurements 11.31 X 8.16 X 5.53 MM

GRADING RESULTS

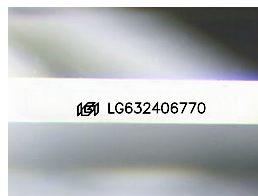
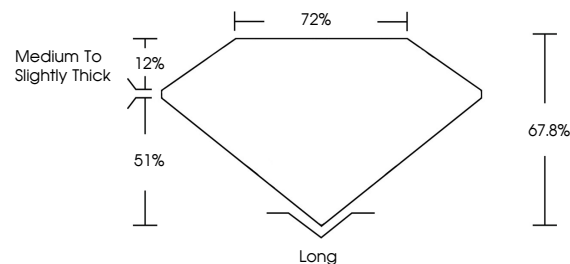
Carat Weight 5.03 CARATS
Color Grade E
Clarity Grade VS 2

ADDITIONAL GRADING INFORMATION

Polish EXCELLENT
Symmetry EXCELLENT
Fluorescence NONE
Inscription(s) LG632406770

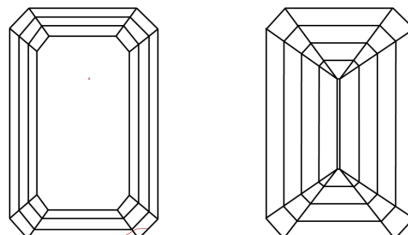
Comments: This Laboratory Grown Diamond was created by Chemical Vapor Deposition (CVD) growth process and may include post-growth treatment. Type IIa

PROPORTIONS



Sample Image Used

CLARITY CHARACTERISTICS



KEY TO SYMBOLS

Red symbols indicate internal characteristics.
Green symbols indicate external characteristics.

COLOR

D E F G H I J Faint Very Light Light

CLARITY

IF VS 1-2 VS 1-2 SI 1-2 I 1-3
Internally Flawless Very Very Slightly Included Very Slightly Included Slightly Included Included