



**INTERNATIONAL  
GEMOLOGICAL  
INSTITUTE**

**ELECTRONIC COPY**

**LG632413422**



May 23, 2024

**IGI Report Number LG632413422**  
**SQUARE CUSHION MODIFIED**  
**BRILLIANT**

**LABORATORY GROWN DIAMOND**  
**4.52 X 4.52 X 2.94 MM**

**Carat Weight 0.55 CARAT**  
**Color Grade FANCY INTENSE PINK**

**Clarity Grade VS 2**

**Polish EXCELLENT**  
**Symmetry EXCELLENT**

**Fluorescence SLIGHT**  
**Inscription(s) IGI LG632413422**

Comments: This Laboratory Grown Diamond was created by Chemical Vapor Deposition (CVD) growth process. Indications of post-growth treatment.

**LABORATORY GROWN DIAMOND REPORT**

May 23, 2024  
IGI Report Number **LG632413422**  
Description **LABORATORY GROWN DIAMOND**  
Shape and Cutting Style **SQUARE CUSHION MODIFIED BRILLIANT**  
Measurements **4.52 X 4.52 X 2.94 MM**

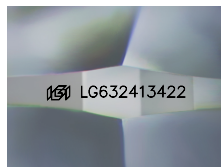
**GRADING RESULTS**

**Carat Weight 0.55 CARAT**  
**Color Grade FANCY INTENSE PINK**  
**Clarity Grade VS 2**

**ADDITIONAL GRADING INFORMATION**

**Polish EXCELLENT**  
**Symmetry EXCELLENT**  
**Fluorescence SLIGHT**  
**Inscription(s) IGI LG632413422**

Comments: This Laboratory Grown Diamond was created by Chemical Vapor Deposition (CVD) growth process. Indications of post-growth treatment.



Sample Image Used



May 23, 2024

**IGI Report Number LG632413422**  
**SQUARE CUSHION MODIFIED**  
**BRILLIANT**

**LABORATORY GROWN DIAMOND**  
**4.52 X 4.52 X 2.94 MM**

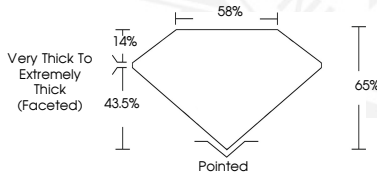
**Carat Weight 0.55 CARAT**  
**Color Grade FANCY INTENSE PINK**

**Clarity Grade VS 2**

**Polish EXCELLENT**  
**Symmetry EXCELLENT**

**Fluorescence SLIGHT**  
**Inscription(s) IGI LG632413422**

Comments: This Laboratory Grown Diamond was created by Chemical Vapor Deposition (CVD) growth process. Indications of post-growth treatment.



THIS DOCUMENT WAS PRODUCED WITH THE FOLLOWING SECURITY MEASURES: SPECIAL DOCUMENT PAPER, INK SCREENS, WATERMARK, BACKGROUND DESIGNS, HOLOGRAM AND OTHER SECURITY FEATURES NOT LISTED AND DO EXCEED DOCUMENT SECURITY INDUSTRY GUIDELINES.

For terms & conditions and to verify this report, please visit [www.igi.org](http://www.igi.org)