



**ELECTRONIC COPY**

**LABORATORY GROWN DIAMOND REPORT**

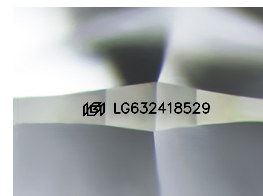
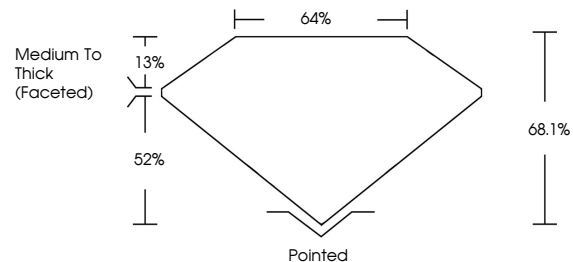
May 6, 2024  
 IGI Report Number **LG632418529**  
 Description **LABORATORY GROWN DIAMOND**  
 Shape and Cutting Style **CUSHION BRILLIANT**  
 Measurements **8.57 X 6.86 X 4.67 MM**  
**GRADING RESULTS**  
 Carat Weight **2.51 CARATS**  
 Color Grade **G**  
 Clarity Grade **VS 2**

**ADDITIONAL GRADING INFORMATION**

Polish **EXCELLENT**  
 Symmetry **EXCELLENT**  
 Fluorescence **NONE**  
 Inscription(s) **IGI LG632418529**

Comments: This Laboratory Grown Diamond was created by Chemical Vapor Deposition (CVD) growth process and may include post-growth treatment. Type IIa

**PROPORTIONS**



Sample Image Used

**COLOR**

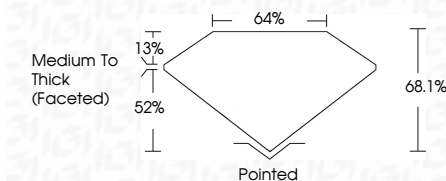
D E F G H I J Faint Very Light Light

**CLARITY**

IF	VS <sup>1-2</sup>	VS <sup>1-2</sup>	SI <sup>1-2</sup>	I <sup>1-3</sup>
Internally Flawless	Very Very Slightly Included	Very Slightly Included	Slightly Included	Included



May 6, 2024  
 IGI Report Number **LG632418529**  
 Description **LABORATORY GROWN DIAMOND**  
 Shape and Cutting Style **CUSHION BRILLIANT**  
 Measurements **8.57 X 6.86 X 4.67 MM**  
**GRADING RESULTS**  
 Carat Weight **2.51 CARATS**  
 Color Grade **G**  
 Clarity Grade **VS 2**



**ADDITIONAL GRADING INFORMATION**

Polish **EXCELLENT**  
 Symmetry **EXCELLENT**  
 Fluorescence **NONE**  
 Inscription(s) **IGI LG632418529**  
 Comments: This Laboratory Grown Diamond was created by Chemical Vapor Deposition (CVD) growth process and may include post-growth treatment. Type IIa



**IGI**



May 6, 2024  
 IGI Report No **LG632418529**  
**CUSHION BRILLIANT**  
**8.57 X 6.86 X 4.67 MM**  
 Carat Weight **2.51 CARATS**  
 Color Grade **G**  
 Clarity Grade **VS 2**  
 Table **64%**  
 Girdle **68.1% (Faceted)**  
 Culet **Pointed**  
 Polish **EXCELLENT**  
 Symmetry **EXCELLENT**  
 Fluorescence **NONE**  
 Inscription(s) **IGI LG632418529**

Comments: This Laboratory Grown Diamond was created by Chemical Vapor Deposition (CVD) growth process and may include post-growth treatment. Type IIa