



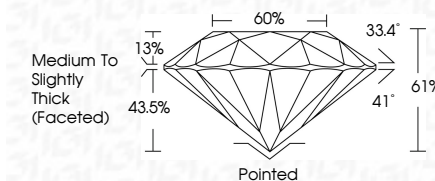
ELECTRONIC COPY

LG632419721
Report verification at igi.org



May 3, 2024
IGI Report Number LG632419721
Description LABORATORY GROWN DIAMOND
Shape and Cutting Style ROUND BRILLIANT
Measurements 8.74 - 8.78 X 5.35 MM

GRADING RESULTS
Carat Weight 2.56 CARATS
Color Grade E
Clarity Grade VS 2
Cut Grade EXCELLENT



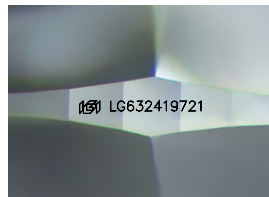
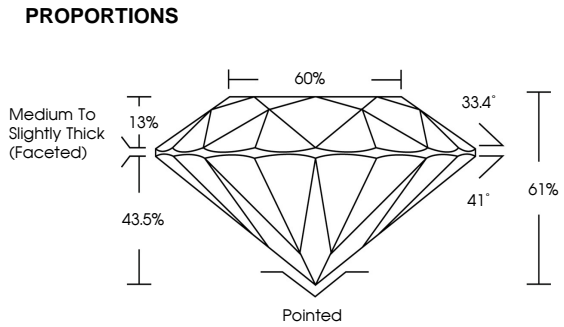
ADDITIONAL GRADING INFORMATION
Polish EXCELLENT
Symmetry EXCELLENT
Fluorescence NONE
Inscription(s) LG632419721
Comments: This Laboratory Grown Diamond was created by Chemical Vapor Deposition (CVD) growth process and may include post-growth treatment. Type IIa



May 3, 2024
IGI Report No. LG632419721
ROUND BRILLIANT
8.74 - 8.78 X 5.35 MM
2.56 CARATS
E
VS 2
EXCELLENT
61%
66%
Medium To Slightly Thick (Faceted)
Pointed
EXCELLENT
EXCELLENT
NONE
IGI LG632419721
Comments: This Laboratory Grown Diamond was created by Chemical Vapor Deposition (CVD) growth process and may include post-growth treatment. Type IIa

May 3, 2024
IGI Report Number LG632419721
Description LABORATORY GROWN DIAMOND
Shape and Cutting Style ROUND BRILLIANT
Measurements 8.74 - 8.78 X 5.35 MM
GRADING RESULTS
Carat Weight 2.56 CARATS
Color Grade E
Clarity Grade VS 2
Cut Grade EXCELLENT
ADDITIONAL GRADING INFORMATION
Polish EXCELLENT
Symmetry EXCELLENT
Fluorescence NONE
Inscription(s) LG632419721

Comments: This Laboratory Grown Diamond was created by Chemical Vapor Deposition (CVD) growth process and may include post-growth treatment. Type IIa



Sample Image Used

Table with 5 columns: D, E, F, G, H, I, J, Faint, Very Light, Light

Table with 5 columns: IF, VS 1-2, VS 1-2, SI 1-2, I 1-3, Internally Flawless, Very Very Slightly Included, Very Slightly Included, Slightly Included, Included

