



**ELECTRONIC COPY**

LG632427005  
Report verification at igi.org



May 8, 2024  
IGI Report Number **LG632427005**  
Description **LABORATORY GROWN DIAMOND**  
Shape and Cutting Style **HEART BRILLIANT**  
Measurements **11.02 X 13.37 X 7.71 MM**  
**GRADING RESULTS**  
Carat Weight **7.01 CARATS**  
Color Grade **FANCY VIVID GREEN**  
Clarity Grade **VS 2**

May 8, 2024  
IGI Report Number **LG632427005**  
Description **LABORATORY GROWN DIAMOND**  
Shape and Cutting Style **HEART BRILLIANT**  
Measurements **11.02 X 13.37 X 7.71 MM**

**GRADING RESULTS**

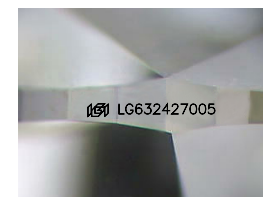
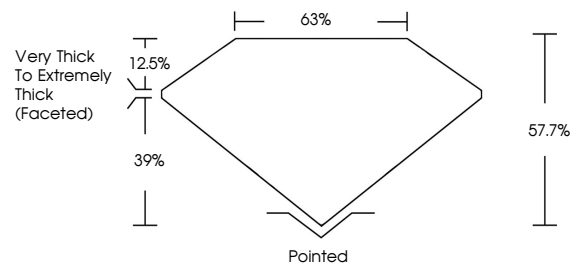
Carat Weight **7.01 CARATS**  
Color Grade **FANCY VIVID GREEN**  
Clarity Grade **VS 2**

**ADDITIONAL GRADING INFORMATION**

Polish **VERY GOOD**  
Symmetry **VERY GOOD**  
Fluorescence **NONE**  
Inscription(s) **IGI LG632427005**

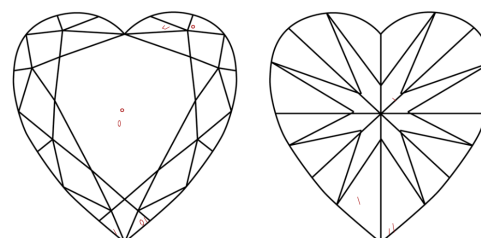
Comments: This Laboratory Grown Diamond was created by Chemical Vapor Deposition (CVD) growth process.  
Indications of post-growth treatment.

**PROPORTIONS**



Sample Image Used

**CLARITY CHARACTERISTICS**



**KEY TO SYMBOLS**

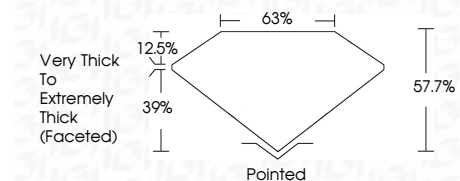
Red symbols indicate internal characteristics.  
Green symbols indicate external characteristics.

**COLOR**

D E F G H I J Faint Very Light Light

**CLARITY**

IF	VS <sup>1-2</sup>	VS <sup>1-2</sup>	SI <sup>1-2</sup>	I <sup>1-3</sup>
Internally Flawless	Very Very Slightly Included	Very Slightly Included	Slightly Included	Included



**ADDITIONAL GRADING INFORMATION**

Polish **VERY GOOD**  
Symmetry **VERY GOOD**  
Fluorescence **NONE**  
Inscription(s) **IGI LG632427005**  
Comments: This Laboratory Grown Diamond was created by Chemical Vapor Deposition (CVD) growth process.  
Indications of post-growth treatment.



**IGI**



May 8, 2024  
IGI Report No LG632427005  
**HEART BRILLIANT**  
11.02 X 13.37 X 7.71 MM  
7.01 CARATS  
FANCY VIVID GREEN  
VS 2  
57.7%  
63%  
Very Thick to Extremely Thick (Faceted)  
Pointed  
Polish VERY GOOD  
Symmetry VERY GOOD  
Fluorescence NONE  
Inscription(s) IGI LG632427005

Comments: This Laboratory Grown Diamond was created by Chemical Vapor Deposition (CVD) growth process.  
Indications of post-growth treatment.