



ELECTRONIC COPY

LG632427717
Report verification at igi.org



May 4, 2024

IGI Report Number **LG632427717**

Description **LABORATORY GROWN DIAMOND**

Shape and Cutting Style **ROUND BRILLIANT**

Measurements **10.33 - 10.41 X 6.12 MM**

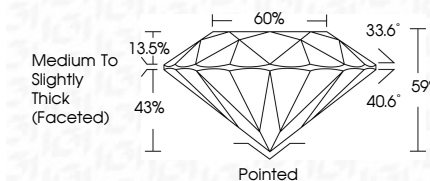
GRADING RESULTS

Carat Weight **4.01 CARATS**

Color Grade **G**

Clarity Grade **VVS 2**

Cut Grade **IDEAL**



ADDITIONAL GRADING INFORMATION

Polish **EXCELLENT**

Symmetry **EXCELLENT**

Fluorescence **NONE**

Inscription(s) **IGI LG632427717**

Comments: This Laboratory Grown Diamond was created by Chemical Vapor Deposition (CVD) growth process and may include post-growth treatment. Type IIa



IGI

May 4, 2024	IGI Report No LG632427717	4.01 CARATS	G	VVS 2	IDEAL	59%	60%	Medium To Slightly Thick (Faceted)	Pointed	EXCELLENT	EXCELLENT	NONE	IGI LG632427717
ROUND BRILLIANT	10.33 - 10.41 X 6.12 MM	Carat Weight	Color Grade	Clarity Grade	Cut Grade	Depth	Table	Gra	Culet	Polish	Symmetry	Fluorescence	Inscription(s)

Comments: This Laboratory Grown Diamond was created by Chemical Vapor Deposition (CVD) growth process and may include post-growth treatment. Type IIa

May 4, 2024

IGI Report No LG632427717

ROUND BRILLIANT

10.33 - 10.41 X 6.12 MM

Carat Weight

Color Grade

Clarity Grade

Cut Grade

Depth

Table

Gra

Culet

Polish

Symmetry

Fluorescence

Inscription(s)

COLOR

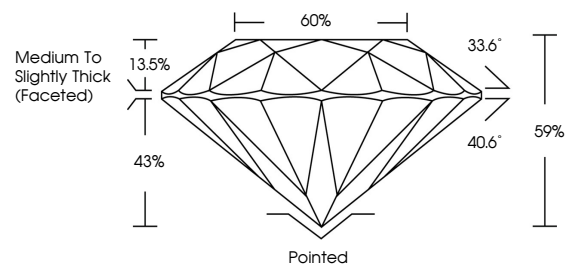
D E F G H I J Faint Very Light Light

CLARITY

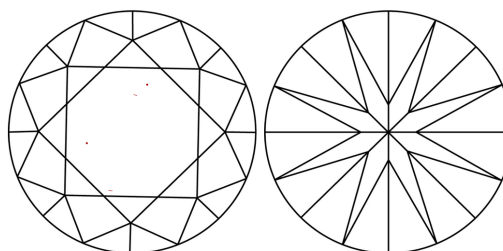
IF VS¹⁻² VS¹⁻² SI¹⁻² I¹⁻³

Internally Flawless Very Very Slightly Included Very Slightly Included Slightly Included Included

PROPORTIONS

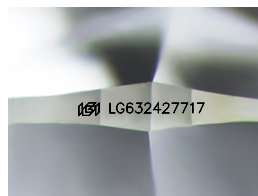


CLARITY CHARACTERISTICS



KEY TO SYMBOLS

Red symbols indicate internal characteristics.
Green symbols indicate external characteristics.



Sample Image Used

