



ELECTRONIC COPY

LG632435603 Report verification at igi.org



May 9, 2024 IGI Report Number LG632435603 Description LABORATORY GROWN DIAMOND Shape and Cutting Style CUT CORNERED RECTANGULAR MODIFIED BRILLIANT Measurements 6.91 X 4.96 X 3.42 MM GRADING RESULTS Carat Weight 1.01 CARAT Color Grade E Clarity Grade VVS 2

May 9, 2024 IGI Report Number LG632435603 Description LABORATORY GROWN DIAMOND Shape and Cutting Style CUT CORNERED RECTANGULAR MODIFIED BRILLIANT Measurements 6.91 X 4.96 X 3.42 MM

GRADING RESULTS

Carat Weight 1.01 CARAT Color Grade E Clarity Grade VVS 2

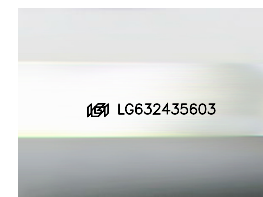
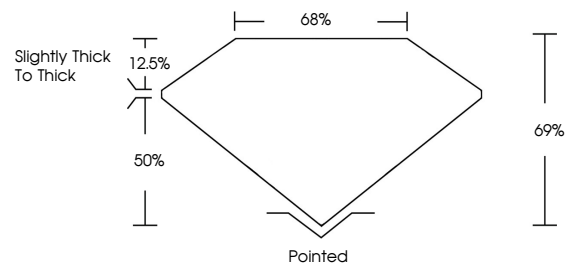
ADDITIONAL GRADING INFORMATION

Polish EXCELLENT Symmetry EXCELLENT Fluorescence NONE

Inscription(s) IGI LG632435603

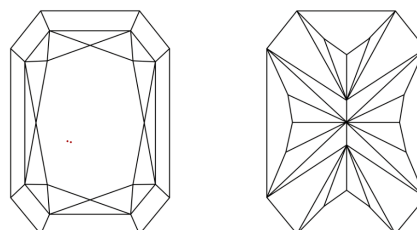
Comments: As Grown - No indication of post-growth treatment. This Laboratory Grown Diamond was created by High Pressure High Temperature (HPHT) growth process. Type II

PROPORTIONS



Sample Image Used

CLARITY CHARACTERISTICS



KEY TO SYMBOLS

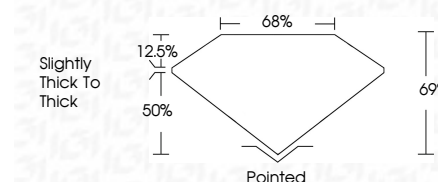
Red symbols indicate internal characteristics. Green symbols indicate external characteristics.

COLOR

D E F G H I J Faint Very Light Light

CLARITY

IF VVS 1-2 VS 1-2 SI 1-2 I 1-3 Internally Flawless Very Very Slightly Included Very Slightly Included Slightly Included Included



ADDITIONAL GRADING INFORMATION

Polish EXCELLENT Symmetry EXCELLENT Fluorescence NONE Inscription(s) IGI LG632435603

Comments: As Grown - No indication of post-growth treatment. This Laboratory Grown Diamond was created by High Pressure High Temperature (HPHT) growth process. Type II



May 9, 2024 IGI Report No. LG632435603 CUT CORNERED RECT. MODIFIED BRILLIANT 1.01 CARAT E VVS 2 68% 69% Slightly thick to thick Polished EXCELLENT EXCELLENT NONE NONE IGI LG632435603 Comments: As Grown - No indication of post-growth treatment. This Laboratory Grown Diamond was created by High Pressure High Temperature (HPHT) growth process. Type II