



ELECTRONIC COPY

LG632436939
Report verification at igi.org



May 27, 2024

IGI Report Number **LG632436939**

Description **LABORATORY GROWN DIAMOND**

Shape and Cutting Style **PRINCESS CUT**

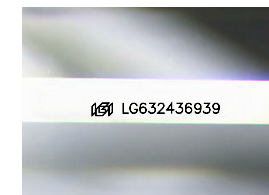
Measurements **6.33 X 6.18 X 4.41 MM**

GRADING RESULTS

Carat Weight **1.50 CARAT**

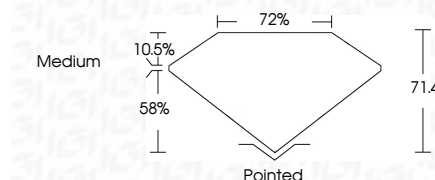
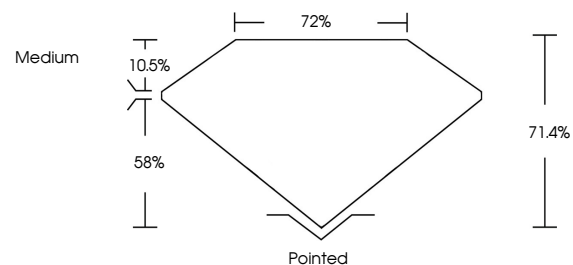
Color Grade **F**

Clarity Grade **VVS 2**



Sample Image Used

PROPORTIONS



May 27, 2024

IGI Report Number **LG632436939**

Description **LABORATORY GROWN DIAMOND**

Shape and Cutting Style **PRINCESS CUT**

Measurements **6.33 X 6.18 X 4.41 MM**

GRADING RESULTS

Carat Weight **1.50 CARAT**

Color Grade **F**

Clarity Grade **VVS 2**

ADDITIONAL GRADING INFORMATION

Polish **EXCELLENT**

Symmetry **VERY GOOD**

Fluorescence **NONE**

Inscription(s) **IGI LG632436939**

Comments: This Laboratory Grown Diamond was created by Chemical Vapor Deposition (CVD) growth process.
Type IIa

COLOR

D E F G H I J Faint Very Light Light

CLARITY

IF	VVS ¹⁻²	VS ¹⁻²	SI ¹⁻²	I ¹⁻³
Internally Flawless	Very Very Slightly Included	Very Slightly Included	Slightly Included	Included

ADDITIONAL GRADING INFORMATION

Polish **EXCELLENT**

Symmetry **VERY GOOD**

Fluorescence **NONE**

Inscription(s) **IGI LG632436939**

Comments: This Laboratory Grown Diamond was created by Chemical Vapor Deposition (CVD) growth process.
Type IIa



IGI

May 27, 2024
IGI Report No. LG632436939

PRINCESS CUT

6.33 X 6.18 X 4.41 MM

1.50 CARAT

F

VVS 2

71.4%

72%

Medium

Pointed

EXCELLENT

VERY GOOD

NONE

IGI LG632436939

Comments: This Laboratory Grown Diamond was created by Chemical Vapor Deposition (CVD) growth process.
Type IIa