



ELECTRONIC COPY

LABORATORY GROWN DIAMOND REPORT

May 28, 2024  
 IGI Report Number **LG632437147**  
 Description **LABORATORY GROWN DIAMOND**  
 Shape and Cutting Style **ROUND BRILLIANT**  
 Measurements **6.41 - 6.48 X 3.86 MM**

**GRADING RESULTS**

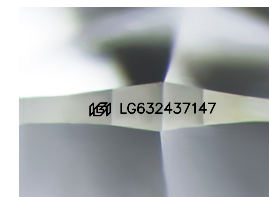
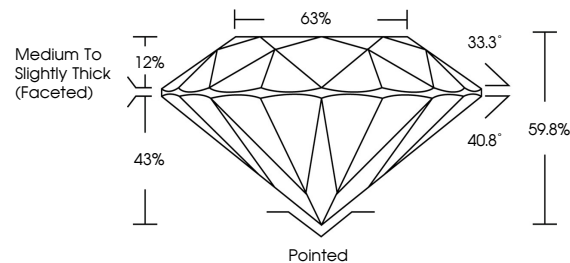
Carat Weight **1.01 CARAT**  
 Color Grade **E**  
 Clarity Grade **VS 2**  
 Cut Grade **EXCELLENT**

ADDITIONAL GRADING INFORMATION

Polish **VERY GOOD**  
 Symmetry **EXCELLENT**  
 Fluorescence **NONE**  
 Inscription(s) **IGI LG632437147**

Comments: This Laboratory Grown Diamond was created by Chemical Vapor Deposition (CVD) growth process. Type IIa

PROPORTIONS



Sample Image Used

COLOR

D	E	F	G	H	I	J	Faint	Very Light	Light
---	---	---	---	---	---	---	-------	------------	-------

CLARITY

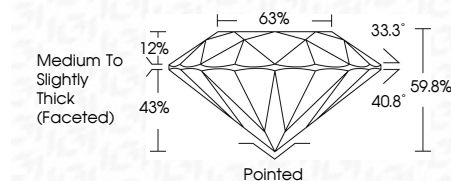
IF	VS <sup>1-2</sup>	VS <sup>1-2</sup>	SI <sup>1-2</sup>	I <sup>1-3</sup>
Internally Flawless	Very Very Slightly Included	Very Slightly Included	Slightly Included	Included



May 28, 2024  
 IGI Report Number **LG632437147**  
 Description **LABORATORY GROWN DIAMOND**  
 Shape and Cutting Style **ROUND BRILLIANT**  
 Measurements **6.41 - 6.48 X 3.86 MM**

**GRADING RESULTS**

Carat Weight **1.01 CARAT**  
 Color Grade **E**  
 Clarity Grade **VS 2**  
 Cut Grade **EXCELLENT**



ADDITIONAL GRADING INFORMATION

Polish **VERY GOOD**  
 Symmetry **EXCELLENT**  
 Fluorescence **NONE**  
 Inscription(s) **IGI LG632437147**  
 Comments: This Laboratory Grown Diamond was created by Chemical Vapor Deposition (CVD) growth process. Type IIa



IGI



May 28, 2024  
 IGI Report No. LG632437147  
 ROUND BRILLIANT  
 6.41 - 6.48 X 3.86 MM  
 Carat Weight 1.01 CARAT  
 Color Grade E  
 Clarity Grade VS 2  
 Cut Grade EXCELLENT  
 Depth 59.8%  
 Table 63%  
 Girdle Medium To Slightly Thick (Faceted)  
 Culet Pointed  
 Polish VERY GOOD  
 Symmetry EXCELLENT  
 Fluorescence NONE  
 Inscription(s) IGI LG632437147

Comments: This Laboratory Grown Diamond was created by Chemical Vapor Deposition (CVD) growth process. Type IIa