



ELECTRONIC COPY

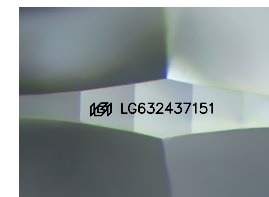
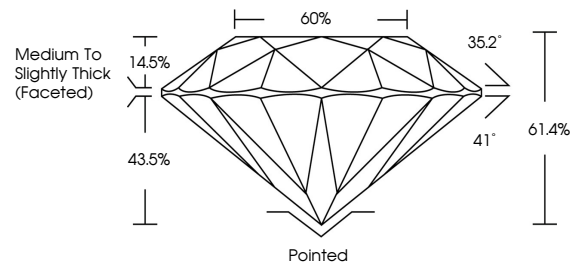
LG632437151
Report verification at igi.org



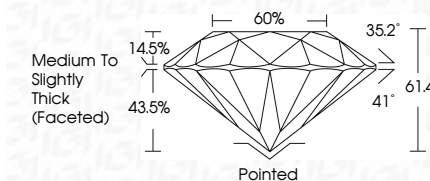
May 28, 2024
IGI Report Number LG632437151
Description LABORATORY GROWN DIAMOND
Shape and Cutting Style ROUND BRILLIANT
Measurements 6.85 - 6.89 X 4.22 MM
GRADING RESULTS
Carat Weight 1.23 CARAT
Color Grade E
Clarity Grade VS 1
Cut Grade IDEAL

May 28, 2024
IGI Report Number LG632437151
Description LABORATORY GROWN DIAMOND
Shape and Cutting Style ROUND BRILLIANT
Measurements 6.85 - 6.89 X 4.22 MM
GRADING RESULTS
Carat Weight 1.23 CARAT
Color Grade E
Clarity Grade VS 1
Cut Grade IDEAL

PROPORTIONS



Sample Image Used



ADDITIONAL GRADING INFORMATION
Polish EXCELLENT
Symmetry EXCELLENT
Fluorescence NONE
Inscription(s) IGI LG632437151

Comments: This Laboratory Grown Diamond was created by Chemical Vapor Deposition (CVD) growth process. Type IIa

COLOR

D E F G H I J Faint Very Light Light

CLARITY

IF VS 1-2 VS 1-2 SI 1-2 I 1-3
Internally Flawless Very Very Slightly Included Very Slightly Included Slightly Included Included

ADDITIONAL GRADING INFORMATION

Polish EXCELLENT
Symmetry EXCELLENT
Fluorescence NONE
Inscription(s) IGI LG632437151
Comments: This Laboratory Grown Diamond was created by Chemical Vapor Deposition (CVD) growth process. Type IIa



IGI

May 28, 2024
IGI Report No. LG632437151
ROUND BRILLIANT
6.85 - 6.89 X 4.22 MM
1.23 CARAT
Color Grade E
Clarity Grade VS 1
Cut Grade IDEAL
Depth 61.4%
Table 66%
Medium To Slightly Thick (Faceted)
Pointed
Polish EXCELLENT
Symmetry EXCELLENT
Fluorescence NONE
Inscriptions(s) IGI LG632437151
Comments: This Laboratory Grown Diamond was created by Chemical Vapor Deposition (CVD) growth process. Type IIa