

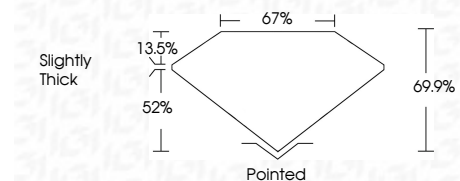


ELECTRONIC COPY

LG632437210
Report verification at igi.org



May 16, 2024
IGI Report Number **LG632437210**
Description **LABORATORY GROWN DIAMOND**
Shape and Cutting Style **CUT CORNERED
RECTANGULAR MODIFIED
BRILLIANT**
Measurements **9.30 X 6.67 X 4.66 MM**
GRADING RESULTS
Carat Weight **2.51 CARATS**
Color Grade **H**
Clarity Grade **VS 1**

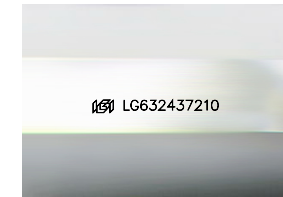
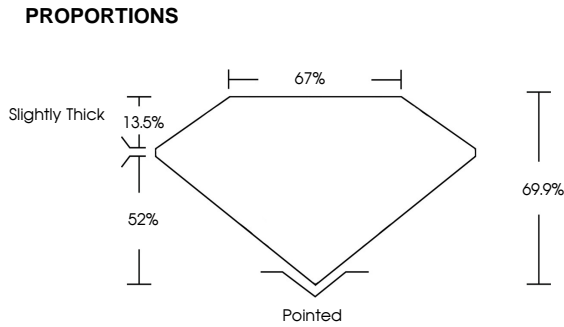


ADDITIONAL GRADING INFORMATION
Polish **EXCELLENT**
Symmetry **EXCELLENT**
Fluorescence **NONE**
Inscription(s) **IGI LG632437210**
Comments: This Laboratory Grown Diamond was created by Chemical Vapor Deposition (CVD) growth process and may include post-growth treatment. Type IIa



May 16, 2024
IGI Report No. LG632437210
CUT CORNERED RECT. MODIFIED BRILLIANT
9.30 X 6.67 X 4.66 MM
2.51 CARATS
H
VS 1
69.9%
67%
Slightly Thick
Pointed
EXCELLENT
EXCELLENT
NONE
IGI LG632437210
Comments: This Laboratory Grown Diamond was created by Chemical Vapor Deposition (CVD) growth process and may include post-growth treatment. Type IIa

May 16, 2024
IGI Report Number **LG632437210**
Description **LABORATORY GROWN DIAMOND**
Shape and Cutting Style **CUT CORNERED RECTANGULAR
MODIFIED BRILLIANT**
Measurements **9.30 X 6.67 X 4.66 MM**
GRADING RESULTS
Carat Weight **2.51 CARATS**
Color Grade **H**
Clarity Grade **VS 1**



Sample Image Used

COLOR

D	E	F	G	H	I	J	Faint	Very Light	Light
---	---	---	---	---	---	---	-------	------------	-------

CLARITY

IF	VS ¹⁻²	VS ¹⁻²	SI ¹⁻²	I ¹⁻³
Internally Flawless	Very Very Slightly Included	Very Slightly Included	Slightly Included	Included

