



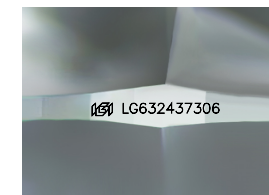
ELECTRONIC COPY

LG632437306
Report verification at igi.org



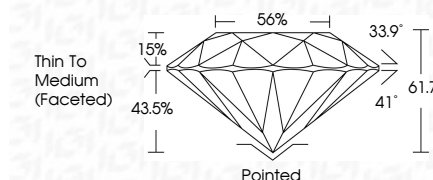
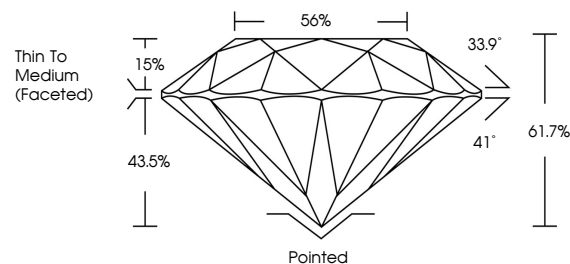
May 16, 2024
IGI Report Number LG632437306
Description LABORATORY GROWN DIAMOND
Shape and Cutting Style ROUND BRILLIANT
Measurements 8.10 - 8.14 X 5.01 MM

GRADING RESULTS
Carat Weight 2.01 CARATS
Color Grade F
Clarity Grade VS 1
Cut Grade IDEAL



Sample Image Used

PROPORTIONS



May 16, 2024
IGI Report Number LG632437306
Description LABORATORY GROWN DIAMOND
Shape and Cutting Style ROUND BRILLIANT
Measurements 8.10 - 8.14 X 5.01 MM
GRADING RESULTS
Carat Weight 2.01 CARATS
Color Grade F
Clarity Grade VS 1
Cut Grade IDEAL

ADDITIONAL GRADING INFORMATION

Polish EXCELLENT
Symmetry EXCELLENT
Fluorescence NONE
Inscription(s) IGI LG632437306

Comments: This Laboratory Grown Diamond was created by Chemical Vapor Deposition (CVD) growth process and may include post-growth treatment. Type IIa

COLOR

D E F G H I J Faint Very Light Light

CLARITY

IF VS 1-2 VS 1-2 SI 1-2 I 1-3
Internally Flawless Very Very Slightly Included Very Slightly Included Slightly Included Included

ADDITIONAL GRADING INFORMATION

Polish EXCELLENT
Symmetry EXCELLENT
Fluorescence NONE
Inscription(s) IGI LG632437306
Comments: This Laboratory Grown Diamond was created by Chemical Vapor Deposition (CVD) growth process and may include post-growth treatment. Type IIa



IGI



May 16, 2024
IGI Report No LG632437306
ROUND BRILLIANT
8.10 - 8.14 X 5.01 MM
2.01 CARATS
Color Grade F
Clarity Grade VS 1
Depth 61.7%
Table 56%
Girdle Thin To Medium (Faceted)
Culet Pointed
Polish EXCELLENT
Symmetry EXCELLENT
Fluorescence NONE
Inscriptions(s) IGI LG632437306
Comments: This Laboratory Grown Diamond was created by Chemical Vapor Deposition (CVD) growth process and may include post-growth treatment. Type IIa