



ELECTRONIC COPY

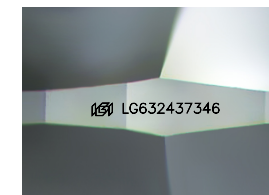
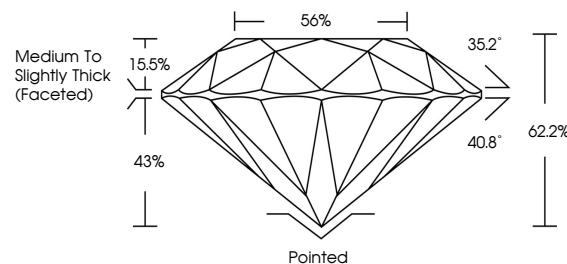
LG632437346 Report verification at igi.org



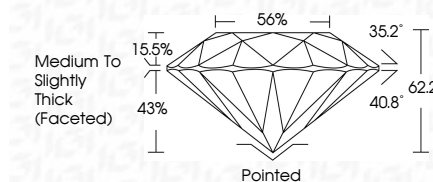
May 16, 2024 IGI Report Number LG632437346 Description LABORATORY GROWN DIAMOND Shape and Cutting Style ROUND BRILLIANT Measurements 7.54 - 7.56 X 4.70 MM GRADING RESULTS Carat Weight 1.65 CARAT Color Grade E Clarity Grade VVS 2 Cut Grade IDEAL

May 16, 2024 IGI Report Number LG632437346 Description LABORATORY GROWN DIAMOND Shape and Cutting Style ROUND BRILLIANT Measurements 7.54 - 7.56 X 4.70 MM GRADING RESULTS Carat Weight 1.65 CARAT Color Grade E Clarity Grade VVS 2 Cut Grade IDEAL

PROPORTIONS



Sample Image Used



ADDITIONAL GRADING INFORMATION

Polish EXCELLENT Symmetry EXCELLENT Fluorescence NONE Inscription(s) IGI LG632437346

Comments: This Laboratory Grown Diamond was created by Chemical Vapor Deposition (CVD) growth process and may include post-growth treatment. Type IIa

COLOR

D E F G H I J Faint Very Light Light

CLARITY

IF VVS 1-2 VS 1-2 SI 1-2 I 1-3 Internally Flawless Very Very Slightly Included Very Slightly Included Slightly Included Included

ADDITIONAL GRADING INFORMATION

Polish EXCELLENT Symmetry EXCELLENT Fluorescence NONE Inscription(s) IGI LG632437346 Comments: This Laboratory Grown Diamond was created by Chemical Vapor Deposition (CVD) growth process and may include post-growth treatment. Type IIa



IGI

May 16, 2024 IGI Report No LG632437346 ROUND BRILLIANT 7.54 - 7.56 X 4.70 MM 1.65 CARAT E VVS 2 IDEAL 62.2% 56% Medium To Slightly Thick (Faceted) Pointed EXCELLENT EXCELLENT NONE IGI LG632437346 Comments: This Laboratory Grown Diamond was created by Chemical Vapor Deposition (CVD) growth process and may include post-growth treatment. Type IIa