



**ELECTRONIC COPY**

LG632437519  
Report verification at [igi.org](http://igi.org)



May 17, 2024

IGI Report Number **LG632437519**

Description **LABORATORY GROWN DIAMOND**

Shape and Cutting Style **ROUND BRILLIANT**

Measurements **6.83 - 6.86 X 4.20 MM**

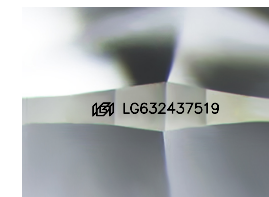
**GRADING RESULTS**

Carat Weight **1.21 CARAT**

Color Grade **E**

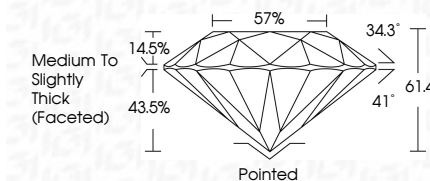
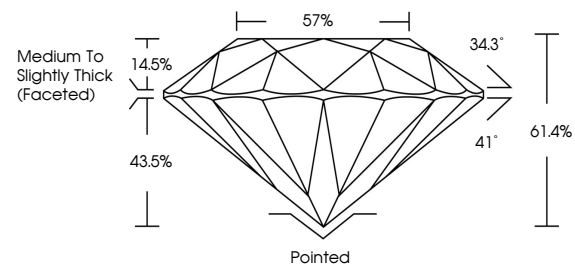
Clarity Grade **VS 1**

Cut Grade **IDEAL**



Sample Image Used

**PROPORTIONS**



May 17, 2024

IGI Report Number **LG632437519**

Description **LABORATORY GROWN DIAMOND**

Shape and Cutting Style **ROUND BRILLIANT**

Measurements **6.83 - 6.86 X 4.20 MM**

**GRADING RESULTS**

Carat Weight **1.21 CARAT**

Color Grade **E**

Clarity Grade **VS 1**

Cut Grade **IDEAL**

**ADDITIONAL GRADING INFORMATION**

Polish **EXCELLENT**

Symmetry **EXCELLENT**

Fluorescence **NONE**

Inscription(s) **IGI LG632437519**

Comments: This Laboratory Grown Diamond was created by Chemical Vapor Deposition (CVD) growth process and may include post-growth treatment. Type IIa

**COLOR**

D E F G H I J Faint Very Light Light

**CLARITY**

IF	VS <sup>1-2</sup>	VS <sup>1-2</sup>	SI <sup>1-2</sup>	I <sup>1-3</sup>
Internally Flawless	Very Very Slightly Included	Very Slightly Included	Slightly Included	Included

**ADDITIONAL GRADING INFORMATION**

Polish **EXCELLENT**

Symmetry **EXCELLENT**

Fluorescence **NONE**

Inscription(s) **IGI LG632437519**

Comments: This Laboratory Grown Diamond was created by Chemical Vapor Deposition (CVD) growth process and may include post-growth treatment. Type IIa



**IGI**



May 17, 2024  
IGI Report No. LG632437519  
ROUND BRILLIANT

6.83 - 6.86 X 4.20 MM

1.21 CARAT  
E

Color Grade  
VS 1  
IDEAL

Clarity Grade  
VS 1  
61.4%

Depth  
57%

Table  
Medium To Slightly Thick (Faceted)

Culet  
Pointed

Polish  
EXCELLENT

Symmetry  
EXCELLENT

Fluorescence  
NONE

Inscription(s)  
IGI LG632437519

Comments: This Laboratory Grown Diamond was created by Chemical Vapor Deposition (CVD) growth process and may include post-growth treatment. Type IIa