



**ELECTRONIC COPY**

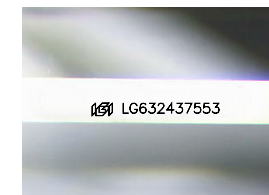
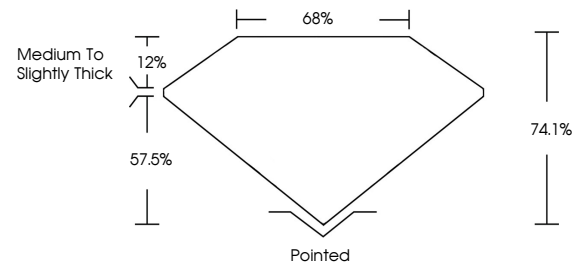
LG632437553  
Report verification at [igi.org](http://igi.org)



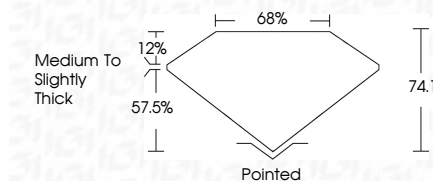
May 15, 2024  
IGI Report Number **LG632437553**  
Description **LABORATORY GROWN DIAMOND**  
Shape and Cutting Style **PRINCESS CUT**  
Measurements **5.60 X 5.57 X 4.13 MM**  
**GRADING RESULTS**  
Carat Weight **1.11 CARAT**  
Color Grade **G**  
Clarity Grade **VVS 2**

May 15, 2024  
IGI Report Number **LG632437553**  
Description **LABORATORY GROWN DIAMOND**  
Shape and Cutting Style **PRINCESS CUT**  
Measurements **5.60 X 5.57 X 4.13 MM**  
**GRADING RESULTS**  
Carat Weight **1.11 CARAT**  
Color Grade **G**  
Clarity Grade **VVS 2**

**PROPORTIONS**



Sample Image Used



**ADDITIONAL GRADING INFORMATION**

Polish **EXCELLENT**  
Symmetry **EXCELLENT**  
Fluorescence **NONE**  
Inscription(s) **IGI LG632437553**

Comments: This Laboratory Grown Diamond was created by Chemical Vapor Deposition (CVD) growth process and may include post-growth treatment. Type IIa

**ADDITIONAL GRADING INFORMATION**

Polish **EXCELLENT**  
Symmetry **EXCELLENT**  
Fluorescence **NONE**  
Inscription(s) **IGI LG632437553**

Comments: This Laboratory Grown Diamond was created by Chemical Vapor Deposition (CVD) growth process and may include post-growth treatment. Type IIa

**COLOR**

D E F G H I J Faint Very Light Light

**CLARITY**

IF	VVS <sup>1-2</sup>	VS <sup>1-2</sup>	SI <sup>1-2</sup>	I <sup>1-3</sup>
Internally Flawless	Very Very Slightly Included	Very Slightly Included	Slightly Included	Included



**IGI**

May 15, 2024  
IGI Report No. **LG632437553**  
**PRINCESS CUT**  
**5.60 X 5.57 X 4.13 MM**  
Carat Weight **1.11 CARAT**  
Color Grade **G**  
Clarity Grade **VVS 2**  
Depth **57.5%**  
Table **12%**  
Girdle **Medium to Slightly Thick**  
Culet **Pointed**  
Polish **EXCELLENT**  
Symmetry **EXCELLENT**  
Fluorescence **NONE**  
Inscription(s) **IGI LG632437553**

Comments: This Laboratory Grown Diamond was created by Chemical Vapor Deposition (CVD) growth process and may include post-growth treatment. Type IIa