

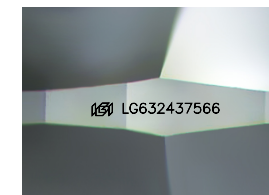


ELECTRONIC COPY

LG632437566 Report verification at igi.org

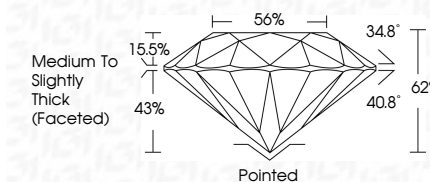
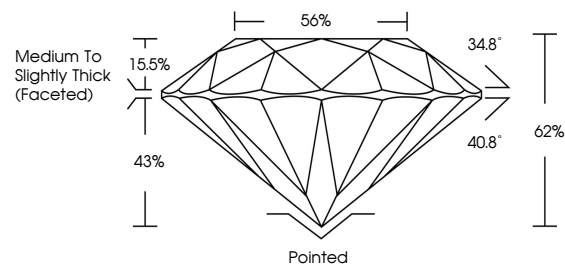


May 16, 2024 IGI Report Number LG632437566 Description LABORATORY GROWN DIAMOND Shape and Cutting Style ROUND BRILLIANT Measurements 6.56 - 6.61 X 4.08 MM GRADING RESULTS Carat Weight 1.08 CARAT Color Grade F Clarity Grade VVS 2 Cut Grade IDEAL



Sample Image Used

PROPORTIONS



May 16, 2024 IGI Report Number LG632437566 Description LABORATORY GROWN DIAMOND Shape and Cutting Style ROUND BRILLIANT Measurements 6.56 - 6.61 X 4.08 MM GRADING RESULTS Carat Weight 1.08 CARAT Color Grade F Clarity Grade VVS 2 Cut Grade IDEAL

ADDITIONAL GRADING INFORMATION

Polish EXCELLENT Symmetry EXCELLENT Fluorescence NONE Inscription(s) IGI LG632437566

Comments: This Laboratory Grown Diamond was created by Chemical Vapor Deposition (CVD) growth process and may include post-growth treatment. Type IIa

COLOR

D E F G H I J Faint Very Light Light

CLARITY

IF VVS 1-2 VS 1-2 SI 1-2 I 1-3 Internally Flawless Very Very Slightly Included Very Slightly Included Slightly Included Included

ADDITIONAL GRADING INFORMATION

Polish EXCELLENT Symmetry EXCELLENT Fluorescence NONE Inscription(s) IGI LG632437566 Comments: This Laboratory Grown Diamond was created by Chemical Vapor Deposition (CVD) growth process and may include post-growth treatment. Type IIa



IGI

May 16, 2024 IGI Report No LG632437566 ROUND BRILLIANT 6.56 - 6.61 X 4.08 MM 1.08 CARAT F VVS 2 IDEAL 62% 56% Medium To Slightly Thick (Faceted) Pointed EXCELLENT EXCELLENT NONE NONE IGI LG632437566 Comments: This Laboratory Grown Diamond was created by Chemical Vapor Deposition (CVD) growth process and may include post-growth treatment. Type IIa