



ELECTRONIC COPY

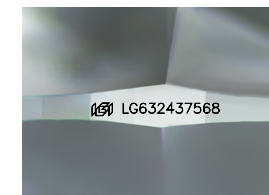
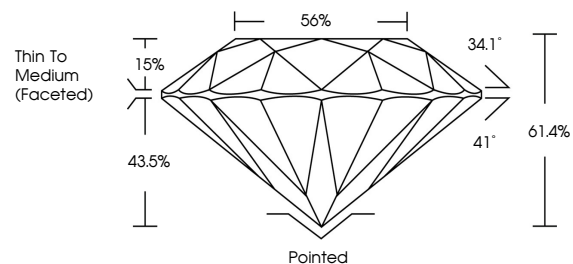
LG632437568 Report verification at igi.org



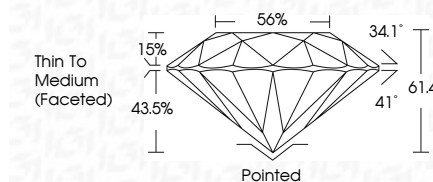
May 16, 2024 IGI Report Number LG632437568 Description LABORATORY GROWN DIAMOND Shape and Cutting Style ROUND BRILLIANT Measurements 6.61 - 6.66 X 4.07 MM GRADING RESULTS Carat Weight 1.08 CARAT Color Grade F Clarity Grade VS 1 Cut Grade IDEAL

May 16, 2024 IGI Report Number LG632437568 Description LABORATORY GROWN DIAMOND Shape and Cutting Style ROUND BRILLIANT Measurements 6.61 - 6.66 X 4.07 MM GRADING RESULTS Carat Weight 1.08 CARAT Color Grade F Clarity Grade VS 1 Cut Grade IDEAL

PROPORTIONS



Sample Image Used



ADDITIONAL GRADING INFORMATION

Polish EXCELLENT Symmetry EXCELLENT Fluorescence NONE Inscription(s) IGI LG632437568

Comments: This Laboratory Grown Diamond was created by Chemical Vapor Deposition (CVD) growth process and may include post-growth treatment. Type IIa

COLOR

Color scale table with categories D, E, F, G, H, I, J, Faint, Very Light, Light

CLARITY

Clarity scale table with categories IF, VS 1-2, VS 1-2, SI 1-2, I 1-3, Internally Flawless, Very Very Slightly Included, Very Slightly Included, Slightly Included, Included

ADDITIONAL GRADING INFORMATION

Polish EXCELLENT Symmetry EXCELLENT Fluorescence NONE Inscription(s) IGI LG632437568 Comments: This Laboratory Grown Diamond was created by Chemical Vapor Deposition (CVD) growth process and may include post-growth treatment. Type IIa



IGI

Summary of report details including date, report number, description, measurements, grading results, and additional information.

Comments: This Laboratory Grown Diamond was created by Chemical Vapor Deposition (CVD) growth process and may include post-growth treatment. Type IIa