



ELECTRONIC COPY

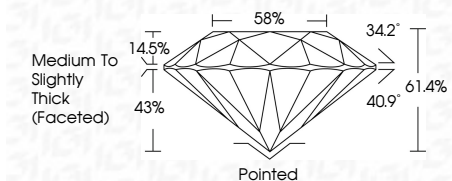
LG632441625
Report verification at igi.org



May 3, 2024
IGI Report Number LG632441625
Description LABORATORY GROWN DIAMOND
Shape and Cutting Style ROUND BRILLIANT
Measurements 10.06 - 10.10 X 6.20 MM

GRADING RESULTS

Carat Weight 3.90 CARATS
Color Grade H
Clarity Grade VS 1
Cut Grade IDEAL



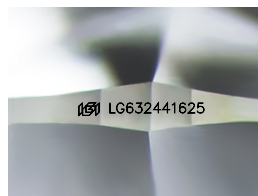
ADDITIONAL GRADING INFORMATION

Polish EXCELLENT
Symmetry EXCELLENT
Fluorescence NONE
Inscription(s) LG632441625
Comments: This Laboratory Grown Diamond was created by Chemical Vapor Deposition (CVD) growth process and may include post-growth treatment. Type IIa



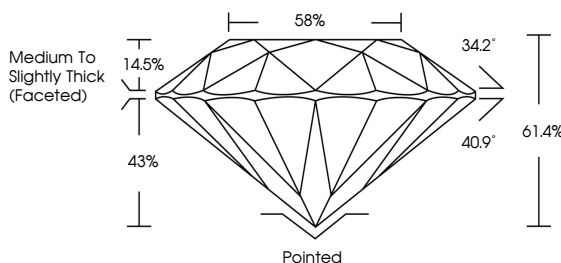
IGI

May 3, 2024
IGI Report No. LG632441625
ROUND BRILLIANT
3.90 CARATS H
10.06 - 10.10 X 6.20 MM VS 1 IDEAL 61.4% 58%
Medium To Slightly Thick (Faceted) Pointed EXCELLENT EXCELLENT NONE
Color Grade H VS 1 IDEAL 61.4% 58%
Clarity Grade VS 1 IDEAL 61.4% 58%
Depth 61.4%
Table 58%
Girdle
Cutler Polished EXCELLENT
Symmetry EXCELLENT
Fluorescence NONE
Inscriptions(s) LG632441625
Comments: This Laboratory Grown Diamond was created by Chemical Vapor Deposition (CVD) growth process and may include post-growth treatment. Type IIa

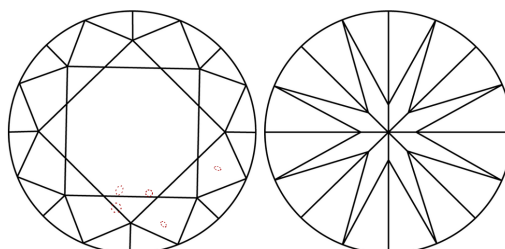


Sample Image Used

PROPORTIONS



CLARITY CHARACTERISTICS



KEY TO SYMBOLS

Red symbols indicate internal characteristics.
Green symbols indicate external characteristics.

COLOR

D E F G H I J Faint Very Light Light

CLARITY

IF VS 1-2 VS 1-2 SI 1-2 I 1-3
Internally Flawless Very Very Slightly Included Very Slightly Included Slightly Included Included

