



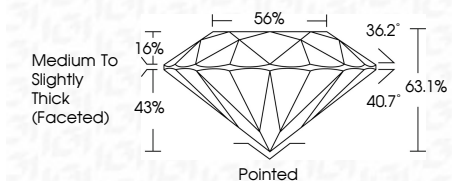
ELECTRONIC COPY

LG632441746
Report verification at igi.org



May 5, 2024
IGI Report Number LG632441746
Description LABORATORY GROWN DIAMOND
Shape and Cutting Style ROUND BRILLIANT
Measurements 9.10 - 9.15 X 5.75 MM

GRADING RESULTS
Carat Weight 3.00 CARATS
Color Grade F
Clarity Grade VS 2
Cut Grade EXCELLENT

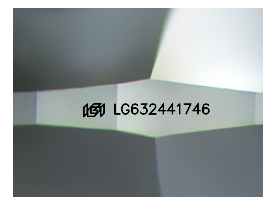
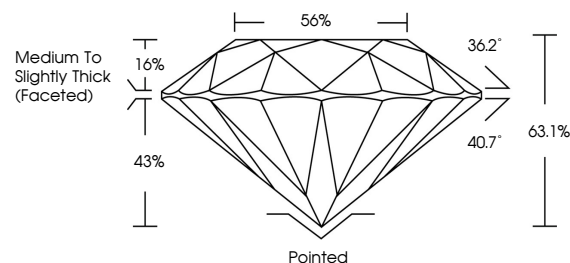


ADDITIONAL GRADING INFORMATION
Polish EXCELLENT
Symmetry EXCELLENT
Fluorescence NONE
Inscription(s) IGI LG632441746
Comments: This Laboratory Grown Diamond was created by Chemical Vapor Deposition (CVD) growth process and may include post-growth treatment. Type IIa



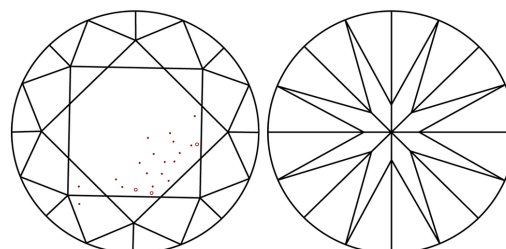
May 5, 2024
IGI Report No. LG632441746
ROUND BRILLIANT
9.10 - 9.15 X 5.75 MM
3.00 CARATS
Color Grade F
Clarity Grade VS 2
Depth 63.1%
Table 56%
Girdle Medium To Slightly Thick (Faceted)
Culet Pointed
Polish EXCELLENT
Symmetry EXCELLENT
Fluorescence NONE
Inscription(s) IGI LG632441746
Comments: This Laboratory Grown Diamond was created by Chemical Vapor Deposition (CVD) growth process and may include post-growth treatment. Type IIa

PROPORTIONS



Sample Image Used

CLARITY CHARACTERISTICS



KEY TO SYMBOLS

Red symbols indicate internal characteristics.
Green symbols indicate external characteristics.

COLOR

D E F G H I J Faint Very Light Light

CLARITY

IF VS 1-2 VS 1-2 SI 1-2 I 1-3
Internally Flawless Very Very Slightly Included Very Slightly Included Slightly Included Included

