



ELECTRONIC COPY

LG632444101
Report verification at igi.org



May 4, 2024

IGI Report Number LG632444101

Description LABORATORY GROWN DIAMOND

Shape and Cutting Style ROUND BRILLIANT

Measurements 9.20 - 9.27 X 5.83 MM

GRADING RESULTS

Carat Weight 3.11 CARATS

Color Grade E

Clarity Grade VS 2

Cut Grade EXCELLENT

May 4, 2024

IGI Report Number LG632444101

Description LABORATORY GROWN DIAMOND

Shape and Cutting Style ROUND BRILLIANT

Measurements 9.20 - 9.27 X 5.83 MM

GRADING RESULTS

Carat Weight 3.11 CARATS

Color Grade E

Clarity Grade VS 2

Cut Grade EXCELLENT

ADDITIONAL GRADING INFORMATION

Polish EXCELLENT

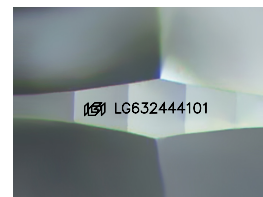
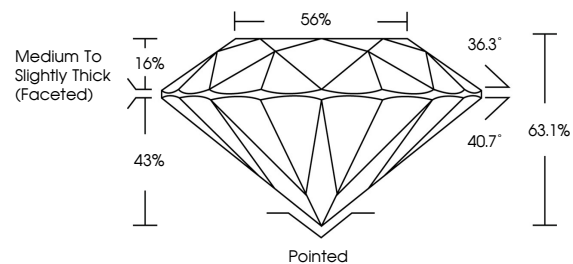
Symmetry EXCELLENT

Fluorescence NONE

Inscription(s) IGI LG632444101

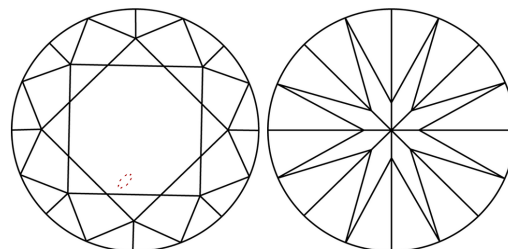
Comments: This Laboratory Grown Diamond was created by Chemical Vapor Deposition (CVD) growth process and may include post-growth treatment. Type IIa

PROPORTIONS



Sample Image Used

CLARITY CHARACTERISTICS



KEY TO SYMBOLS

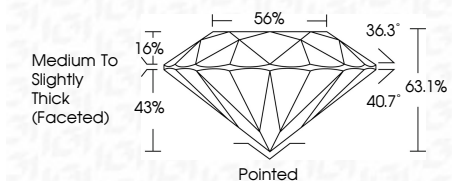
Red symbols indicate internal characteristics. Green symbols indicate external characteristics.

COLOR

D E F G H I J Faint Very Light Light

CLARITY

IF VS 1-2 VS 1-2 SI 1-2 I 1-3 Internally Flawless Very Very Slightly Included Very Slightly Included Slightly Included Included



ADDITIONAL GRADING INFORMATION

Polish EXCELLENT

Symmetry EXCELLENT

Fluorescence NONE

Inscription(s) IGI LG632444101

Comments: This Laboratory Grown Diamond was created by Chemical Vapor Deposition (CVD) growth process and may include post-growth treatment. Type IIa



IGI



Summary table of report details: May 4, 2024, IGI Report No LG632444101, ROUND BRILLIANT, 9.20 - 9.27 X 5.83 MM, 3.11 CARATS, E, VS 2, EXCELLENT, 63.1%, 56%, Medium To Slightly Thick (Faceted), Pointed, EXCELLENT, EXCELLENT, NONE, IGI LG632444101. Includes comments on CVD growth process and post-growth treatment.