



ELECTRONIC COPY

LG632446587
Report verification at igi.org



May 4, 2024
IGI Report Number **LG632446587**
Description **LABORATORY GROWN DIAMOND**
Shape and Cutting Style **EMERALD CUT**
Measurements **8.08 X 5.95 X 4.15 MM**
GRADING RESULTS
Carat Weight **1.95 CARAT**
Color Grade **FANCY INTENSE BLUE**
Clarity Grade **SI 1**

LABORATORY GROWN DIAMOND REPORT

May 4, 2024
IGI Report Number **LG632446587**
Description **LABORATORY GROWN DIAMOND**
Shape and Cutting Style **EMERALD CUT**
Measurements **8.08 X 5.95 X 4.15 MM**

GRADING RESULTS

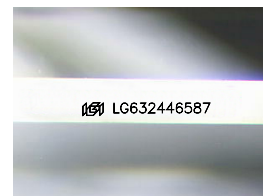
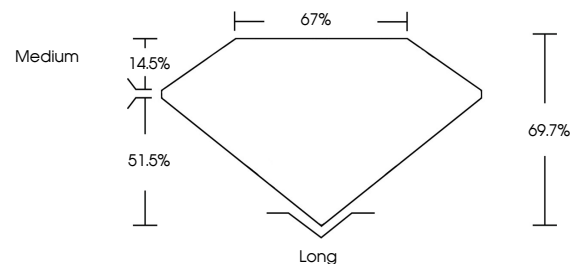
Carat Weight **1.95 CARAT**
Color Grade **FANCY INTENSE BLUE**
Clarity Grade **SI 1**

ADDITIONAL GRADING INFORMATION

Polish **EXCELLENT**
Symmetry **EXCELLENT**
Fluorescence **NONE**
Inscription(s) **IGI LG632446587**

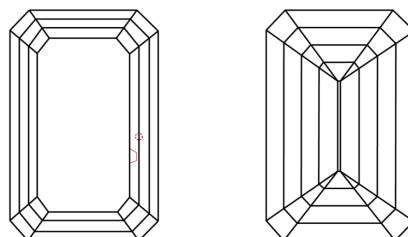
Comments: This Laboratory Grown Diamond was created by Chemical Vapor Deposition (CVD) growth process.
Indications of post-growth treatment.

PROPORTIONS



Sample Image Used

CLARITY CHARACTERISTICS



KEY TO SYMBOLS

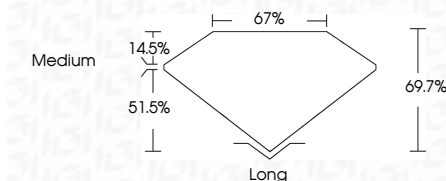
Red symbols indicate internal characteristics.
Green symbols indicate external characteristics.

COLOR

D E F G H I J Faint Very Light Light

CLARITY

IF	VS ¹⁻²	VS ¹⁻²	SI ¹⁻²	I ¹⁻³
Internally Flawless	Very Very Slightly Included	Very Slightly Included	Slightly Included	Included



ADDITIONAL GRADING INFORMATION

Polish **EXCELLENT**
Symmetry **EXCELLENT**
Fluorescence **NONE**
Inscription(s) **IGI LG632446587**
Comments: This Laboratory Grown Diamond was created by Chemical Vapor Deposition (CVD) growth process.
Indications of post-growth treatment.



IGI

May 4, 2024
IGI Report No. **LG632446587**
EMERALD CUT
8.08 X 5.95 X 4.15 MM
Carat Weight **1.95 CARAT**
Color Grade **FANCY INTENSE BLUE**
Clarity Grade **SI 1**
Depth **51.5%**
Table **14.5%**
Girdle **67%**
Medium
Culet **Long**
Polish **EXCELLENT**
Symmetry **EXCELLENT**
Fluorescence **NONE**
Inscription(s) **IGI LG632446587**

Comments: This Laboratory Grown Diamond was created by Chemical Vapor Deposition (CVD) growth process.
Indications of post-growth treatment.