



**ELECTRONIC COPY**

LG632450223  
Report verification at igi.org

**LABORATORY GROWN DIAMOND REPORT**

May 2, 2024  
IGI Report Number **LG632450223**  
Description **LABORATORY GROWN DIAMOND**  
Shape and Cutting Style **SQUARE EMERALD CUT**  
Measurements **6.73 X 6.72 X 4.58 MM**

**GRADING RESULTS**

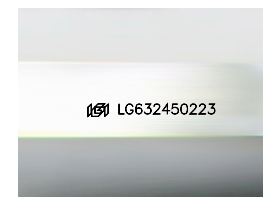
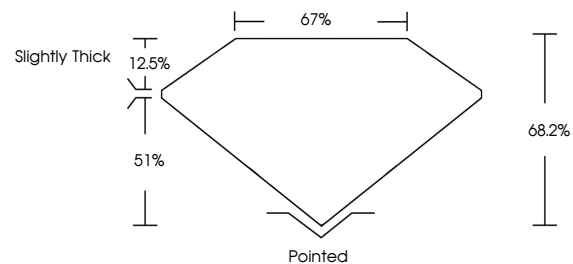
Carat Weight **1.92 CARAT**  
Color Grade **H**  
Clarity Grade **VS 1**

**ADDITIONAL GRADING INFORMATION**

Polish **EXCELLENT**  
Symmetry **EXCELLENT**  
Fluorescence **NONE**  
Inscription(s) **IGI LG632450223**

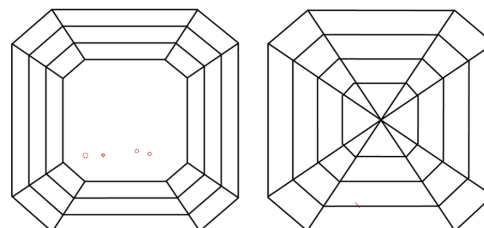
Comments: This Laboratory Grown Diamond was created by Chemical Vapor Deposition (CVD) growth process and may include post-growth treatment. Type IIa

**PROPORTIONS**



Sample Image Used

**CLARITY CHARACTERISTICS**



**KEY TO SYMBOLS**

Red symbols indicate internal characteristics.  
Green symbols indicate external characteristics.

**COLOR**

D E F G H I J Faint Very Light Light

**CLARITY**

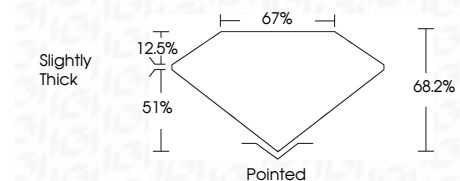
IF	VS <sup>1-2</sup>	VS <sup>1-2</sup>	SI <sup>1-2</sup>	I <sup>1-3</sup>
Internally Flawless	Very Very Slightly Included	Very Slightly Included	Slightly Included	Included



May 2, 2024  
IGI Report Number **LG632450223**  
Description **LABORATORY GROWN DIAMOND**  
Shape and Cutting Style **SQUARE EMERALD CUT**  
Measurements **6.73 X 6.72 X 4.58 MM**

**GRADING RESULTS**

Carat Weight **1.92 CARAT**  
Color Grade **H**  
Clarity Grade **VS 1**



**ADDITIONAL GRADING INFORMATION**

Polish **EXCELLENT**  
Symmetry **EXCELLENT**  
Fluorescence **NONE**  
Inscription(s) **IGI LG632450223**  
Comments: This Laboratory Grown Diamond was created by Chemical Vapor Deposition (CVD) growth process and may include post-growth treatment. Type IIa



**IGI**

May 2, 2024  
IGI Report No LG632450223  
**SQUARE EMERALD CUT**  
6.73 X 6.72 X 4.58 MM

Carat Weight	1.92 CARAT
Color Grade	H
Clarity Grade	VS 1
Depth	68.2%
Table	67%
Graile	Slightly Thick
Culet	Pointed
Polish	EXCELLENT
Symmetry	EXCELLENT
Fluorescence	NONE
Inscription(s)	IGI LG632450223

Comments: This Laboratory Grown Diamond was created by Chemical Vapor Deposition (CVD) growth process and may include post-growth treatment. Type IIa