



ELECTRONIC COPY

LG632451149
Report verification at igi.org



May 8, 2024
IGI Report Number: LG632451149
Description: LABORATORY GROWN DIAMOND
Shape and Cutting Style: ROUND BRILLIANT
Measurements: 9.42 - 9.47 X 5.87 MM
GRADING RESULTS
Carat Weight: 3.29 CARATS
Color Grade: FANCY INTENSE PINK
Clarity Grade: VS 1
Cut Grade: EXCELLENT

LABORATORY GROWN DIAMOND REPORT

May 8, 2024
IGI Report Number: LG632451149
Description: LABORATORY GROWN DIAMOND
Shape and Cutting Style: ROUND BRILLIANT
Measurements: 9.42 - 9.47 X 5.87 MM

GRADING RESULTS

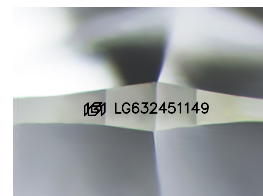
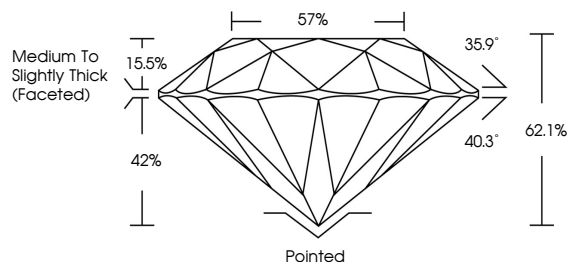
Carat Weight: 3.29 CARATS
Color Grade: FANCY INTENSE PINK
Clarity Grade: VS 1
Cut Grade: EXCELLENT

ADDITIONAL GRADING INFORMATION

Polish: EXCELLENT
Symmetry: EXCELLENT
Fluorescence: SLIGHT
Inscription(s): IGI LG632451149

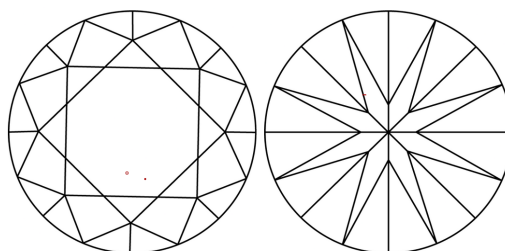
Comments: This Laboratory Grown Diamond was created by Chemical Vapor Deposition (CVD) growth process. Indications of post-growth treatment.

PROPORTIONS



Sample Image Used

CLARITY CHARACTERISTICS



KEY TO SYMBOLS

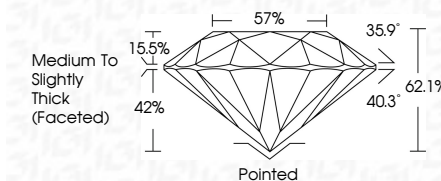
Red symbols indicate internal characteristics. Green symbols indicate external characteristics.

COLOR

D E F G H I J Faint Very Light Light

CLARITY

Table with columns for clarity grades (IF, VVS, VS, SI, I) and their corresponding descriptions (Internally Flawless, Very Very Slightly Included, etc.)



ADDITIONAL GRADING INFORMATION

Polish: EXCELLENT
Symmetry: EXCELLENT
Fluorescence: SLIGHT
Inscription(s): IGI LG632451149
Comments: This Laboratory Grown Diamond was created by Chemical Vapor Deposition (CVD) growth process. Indications of post-growth treatment.



IGI



May 8, 2024
IGI Report No LG632451149
ROUND BRILLIANT
3.29 CARATS
FANCY INTENSE PINK
VS 1
EXCELLENT
62.1%
57%
Medium To Slightly Thick (Faceted)
Pointed
EXCELLENT
EXCELLENT
SLIGHT
IGI LG632451149
Comments: This Laboratory Grown Diamond was created by Chemical Vapor Deposition (CVD) growth process. Indications of post-growth treatment.