



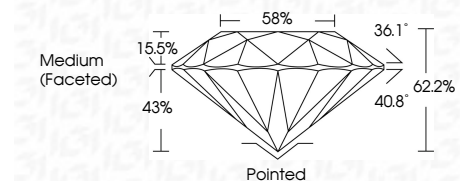
ELECTRONIC COPY

LG632454338
Report verification at igi.org



April 30, 2024
IGI Report Number **LG632454338**
Description **LABORATORY GROWN DIAMOND**
Shape and Cutting Style **ROUND BRILLIANT**
Measurements **6.52 - 6.56 X 4.06 MM**

GRADING RESULTS
Carat Weight **1.08 CARAT**
Color Grade **D**
Clarity Grade **VS 1**
Cut Grade **IDEAL**



ADDITIONAL GRADING INFORMATION
Polish **EXCELLENT**
Symmetry **EXCELLENT**
Fluorescence **NONE**
Inscription(s) **IGI LG632454338**
Comments: As Grown - No indication of post-growth treatment.
This Laboratory Grown Diamond was created by High Pressure High Temperature (HPHT) growth process.
Type II



April 30, 2024
IGI Report No LG632454338
ROUND BRILLIANT
6.52 - 6.56 X 4.06 MM
1.08 CARAT
D
VS 1
IDEAL
62.2%
58%
Medium (Faceted)
Pointed
EXCELLENT
EXCELLENT
NONE
IGI LG632454338
Comments: As Grown - No indication of post-growth treatment.
This Laboratory Grown Diamond was created by High Pressure High Temperature (HPHT) growth process.
Type II

LABORATORY GROWN DIAMOND REPORT

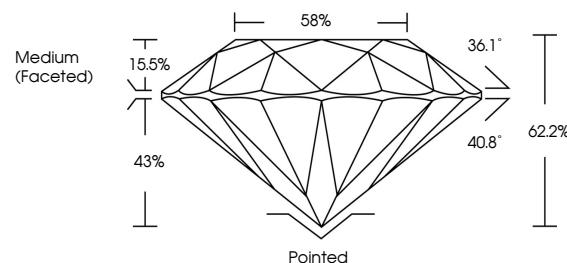
April 30, 2024
IGI Report Number **LG632454338**
Description **LABORATORY GROWN DIAMOND**
Shape and Cutting Style **ROUND BRILLIANT**
Measurements **6.52 - 6.56 X 4.06 MM**

GRADING RESULTS
Carat Weight **1.08 CARAT**
Color Grade **D**
Clarity Grade **VS 1**
Cut Grade **IDEAL**

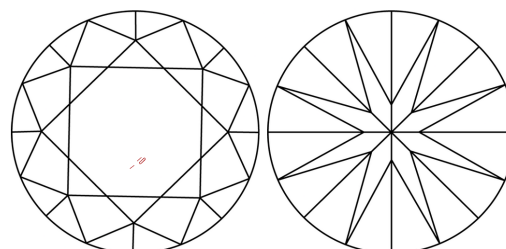
ADDITIONAL GRADING INFORMATION
Polish **EXCELLENT**
Symmetry **EXCELLENT**
Fluorescence **NONE**
Inscription(s) **IGI LG632454338**

Comments: As Grown - No indication of post-growth treatment.
This Laboratory Grown Diamond was created by High Pressure High Temperature (HPHT) growth process.
Type II

PROPORTIONS

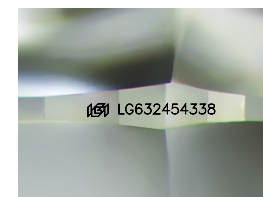


CLARITY CHARACTERISTICS



KEY TO SYMBOLS

Red symbols indicate internal characteristics.
Green symbols indicate external characteristics.



Sample Image Used

COLOR

D E F G H I J Faint Very Light Light

CLARITY

IF	VS ¹⁻²	VS ¹⁻²	SI ¹⁻²	I ¹⁻³
Internally Flawless	Very Very Slightly Included	Very Slightly Included	Slightly Included	Included

