



ELECTRONIC COPY

LG632457039
Report verification at igi.org

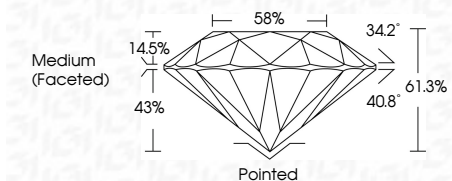


May 6, 2024

IGI Report Number **LG632457039**
Description **LABORATORY GROWN DIAMOND**
Shape and Cutting Style **ROUND BRILLIANT**
Measurements **12.86 - 12.89 X 7.89 MM**

GRADING RESULTS

Carat Weight **8.07 CARATS**
Color Grade **F**
Clarity Grade **VS 2**
Cut Grade **IDEAL**



ADDITIONAL GRADING INFORMATION

Polish **EXCELLENT**
Symmetry **EXCELLENT**
Fluorescence **NONE**
Inscription(s) **IGI LG632457039**

Comments: HEARTS & ARROWS
This Laboratory Grown Diamond was created by Chemical Vapor Deposition (CVD) growth process and may include post-growth treatment.
Type IIa



IGI

May 6, 2024
IGI Report No LG632457039
ROUND BRILLIANT
12.86 - 12.89 X 7.89 MM
8.07 CARATS
F
VS 2
IDEAL
61.3%
58%
Medium (Faceted)
Pointed
EXCELLENT
EXCELLENT
NONE
IGI LG632457039
Comments: HEARTS & ARROWS
This Laboratory Grown Diamond was created by Chemical Vapor Deposition (CVD) growth process and may include post-growth treatment.
Type IIa

May 6, 2024
IGI Report Number **LG632457039**
Description **LABORATORY GROWN DIAMOND**
Shape and Cutting Style **ROUND BRILLIANT**
Measurements **12.86 - 12.89 X 7.89 MM**

GRADING RESULTS

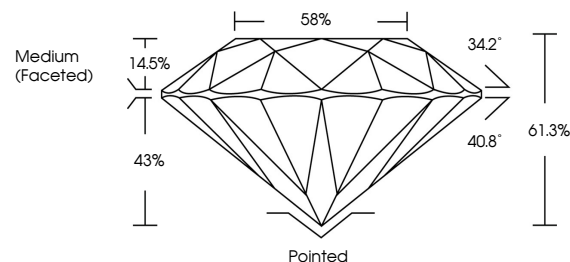
Carat Weight **8.07 CARATS**
Color Grade **F**
Clarity Grade **VS 2**
Cut Grade **IDEAL**

ADDITIONAL GRADING INFORMATION

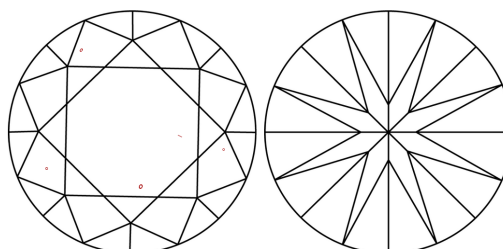
Polish **EXCELLENT**
Symmetry **EXCELLENT**
Fluorescence **NONE**
Inscription(s) **IGI LG632457039**

Comments: HEARTS & ARROWS
This Laboratory Grown Diamond was created by Chemical Vapor Deposition (CVD) growth process and may include post-growth treatment.
Type IIa

PROPORTIONS

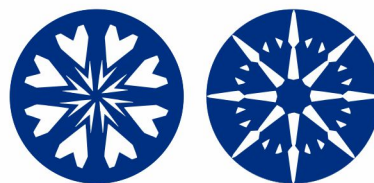


CLARITY CHARACTERISTICS

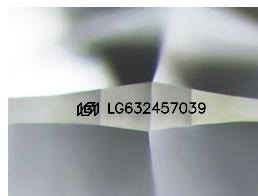


KEY TO SYMBOLS

Red symbols indicate internal characteristics.
Green symbols indicate external characteristics.



www.igi.org



Sample Image Used

COLOR

D E F G H I J Faint Very Light Light

CLARITY

IF	VS ¹⁻²	VS ¹⁻²	SI ¹⁻²	I ¹⁻³
Internally Flawless	Very Very Slightly Included	Very Slightly Included	Slightly Included	Included

