



**ELECTRONIC COPY**

LG632461085  
Report verification at igi.org



June 21, 2024

IGI Report Number **LG632461085**

Description **LABORATORY GROWN DIAMOND**

Shape and Cutting Style **EMERALD CUT**

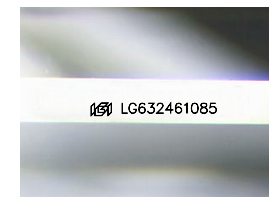
Measurements **7.08 X 4.83 X 3.11 MM**

**GRADING RESULTS**

Carat Weight **1.03 CARAT**

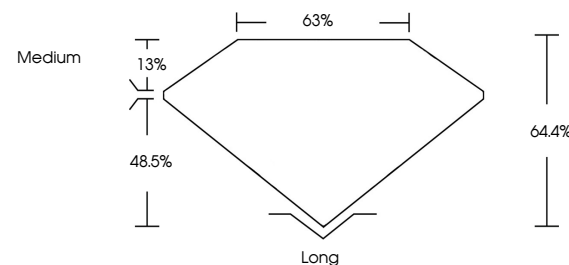
Color Grade **E**

Clarity Grade **VVS 2**

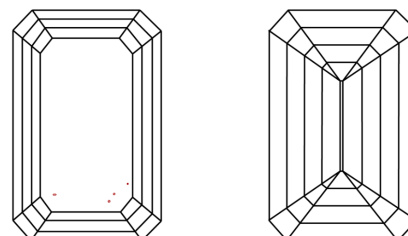


Sample Image Used

**PROPORTIONS**



**CLARITY CHARACTERISTICS**



**KEY TO SYMBOLS**

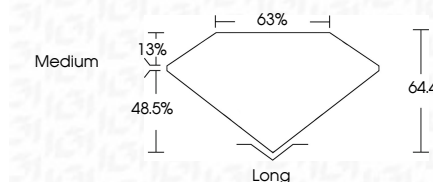
Red symbols indicate internal characteristics.  
Green symbols indicate external characteristics.

**COLOR**

D E F G H I J Faint Very Light Light

**CLARITY**

IF	VS <sup>1-2</sup>	VS <sup>1-2</sup>	SI <sup>1-2</sup>	I <sup>1-3</sup>
Internally Flawless	Very Very Slightly Included	Very Slightly Included	Slightly Included	Included



**ADDITIONAL GRADING INFORMATION**

Polish **EXCELLENT**

Symmetry **EXCELLENT**

Fluorescence **NONE**

Inscription(s) **IGI LG632461085**

Comments: This Laboratory Grown Diamond was created by Chemical Vapor Deposition (CVD) growth process. Type IIa



**IGI**



June 21, 2024  
IGI Report No. LG632461085  
**EMERALD CUT**  
7.08 X 4.83 X 3.11 MM  
Carat Weight **1.03 CARAT**  
Color Grade **E**  
Clarity Grade **VVS 2**  
Depth **48.5%**  
Table **13%**  
Girdle **Medium**  
Culet **Long**  
Polish **EXCELLENT**  
Symmetry **EXCELLENT**  
Fluorescence **NONE**  
Inscription(s) **IGI LG632461085**  
Comments: This Laboratory Grown Diamond was created by Chemical Vapor Deposition (CVD) growth process. Type IIa