



**INTERNATIONAL  
GEMOLOGICAL  
INSTITUTE**

**ELECTRONIC COPY**

**LABORATORY GROWN  
DIAMOND REPORT**

**LG632469783**

**IGI LABORATORY GROWN  
DIAMOND ID REPORT**

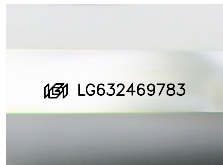
April 25, 2024  
IGI Report Number **LG632469783**  
**EMERALD CUT**  
**5.81 X 3.74 X 2.48 MM**  
Carat Weight 0.53 CARAT  
Color Grade E  
Clarity Grade VS 1  
Polish EXCELLENT  
Symmetry EXCELLENT  
Fluorescence NONE  
Inscription(s) LG632469783

Comments: This Laboratory Grown Diamond was created by Chemical Vapor Deposition (CVD) growth process and may include post-growth treatment. Type Iia

**LABORATORY GROWN DIAMOND REPORT**

**IGI LABORATORY GROWN DIAMOND IDENTIFICATION REPORT**

April 25, 2024  
IGI Report Number **LG632469783**  
Description **LABORATORY GROWN DIAMOND**  
Shape and Cutting Style **EMERALD CUT**  
Measurements **5.81 X 3.74 X 2.48 MM**



Sample Image Used

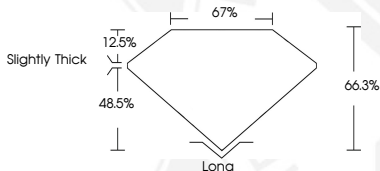
**GRADING RESULTS**

Carat Weight 0.53 CARAT  
Color Grade E  
Clarity Grade VS 1

**ADDITIONAL GRADING INFORMATION**

Polish EXCELLENT  
Symmetry EXCELLENT  
Fluorescence NONE  
Inscription(s) LG632469783

Comments: This Laboratory Grown Diamond was created by Chemical Vapor Deposition (CVD) growth process and may include post-growth treatment. Type Iia



**IGI LABORATORY GROWN  
DIAMOND ID REPORT**

April 25, 2024  
IGI Report Number **LG632469783**  
**EMERALD CUT**  
**5.81 X 3.74 X 2.48 MM**  
Carat Weight 0.53 CARAT  
Color Grade E  
Clarity Grade VS 1  
Polish EXCELLENT  
Symmetry EXCELLENT  
Fluorescence NONE  
Inscription(s) LG632469783

Comments: This Laboratory Grown Diamond was created by Chemical Vapor Deposition (CVD) growth process and may include post-growth treatment. Type Iia



THIS DOCUMENT WAS PRODUCED WITH THE FOLLOWING SECURITY MEASURES: SPECIAL DOCUMENT PAPER, INK SCREENS, WATERMARK, BACKGROUND DESIGN, HOLOGRAM AND OTHER SECURITY FEATURES NOT LISTED AND DO EXCEED DOCUMENT SECURITY INDUSTRY GUIDELINES.

For terms & conditions and to verify this report, please visit [www.igi.org](http://www.igi.org)