

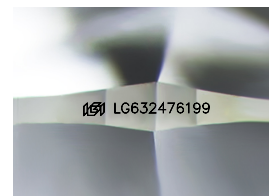
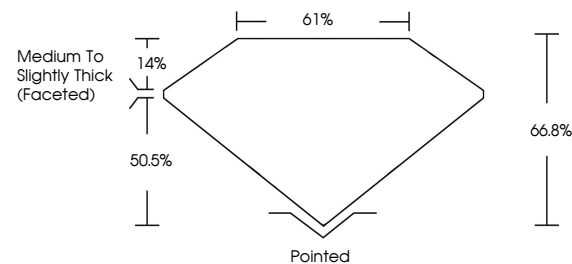


ELECTRONIC COPY

LABORATORY GROWN DIAMOND REPORT

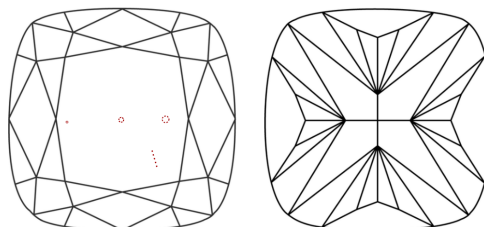
LG632476199
Report verification at igi.org

PROPORTIONS



Sample Image Used

CLARITY CHARACTERISTICS



KEY TO SYMBOLS

Red symbols indicate internal characteristics.
Green symbols indicate external characteristics.

COLOR

D E F G H I J Faint Very Light Light

CLARITY

IF	VVS ¹⁻²	VS ¹⁻²	SI ¹⁻²	I ¹⁻³
Internally Flawless	Very Very Slightly Included	Very Slightly Included	Slightly Included	Included



© IGI 2020, International Gemological Institute

FD - 10 20

www.igi.org

DIAMOND REPORT



April 30, 2024

IGI Report Number **LG632476199**Description **LABORATORY GROWN DIAMOND**Shape and Cutting Style **SQUARE CUSHION BRILLIANT**

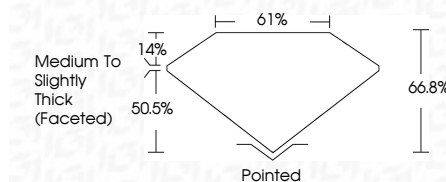
Measurements **6.44 X 6.24 X 4.17 MM**

GRADING RESULTS

Carat Weight 1.30 CARAT

Color Grade

Clarity Grade VS 1



ADDITIONAL GRADING INFORMATION

Polish EXCELLENT

Symmetry **EXCELLENT**Fluorescence **NONE**Inscription(s)  LG632476199

Comments: This Laboratory Grown Diamond was created by Chemical Vapor Deposition (CVD) growth process and may include post-growth treatment.
Type IIa



April 30, 2024	Carat Weight	1.30 CARAT
GI Report No. LG32476199	Color Grade	E
SQUARE CUT FLOW BRILLIANT	Clarity Grade	VS 1
44.44 X 44.44 X 4.17 MM	Depth	66.9%
	Table	61%
	Girdle	Medium to Slightly Thick (Faceted)
	Culet	Pointed
	Polish	EXCELLENT
	Symmetry	EXCELLENT
	Fluorescence	NONE
	Inscription(s)	169 LG32476199

Comments:

This Laboratory Grown Diamond was grown using a High Pressure High Temperature (HPHT) growth process and may include post-growth treatment.

Type IIA