



**ELECTRONIC COPY**

LG632478429  
Report verification at igi.org



May 3, 2024

IGI Report Number **LG632478429**

Description **LABORATORY GROWN DIAMOND**

Shape and Cutting Style **CUT CORNERED  
RECTANGULAR MODIFIED  
BRILLIANT**

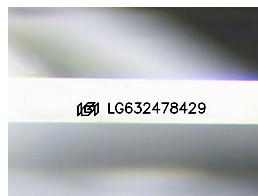
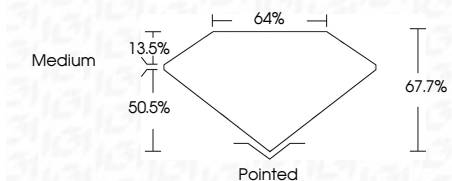
Measurements **9.15 X 6.06 X 4.10 MM**

**GRADING RESULTS**

Carat Weight **1.94 CARAT**

Color Grade **H**

Clarity Grade **VVS 2**



Sample Image Used

**ADDITIONAL GRADING INFORMATION**

Polish **EXCELLENT**

Symmetry **EXCELLENT**

Fluorescence **NONE**

Inscription(s) **IGI LG632478429**

Comments: This Laboratory Grown Diamond was created by Chemical Vapor Deposition (CVD) growth process and may include post-growth treatment. Type IIa



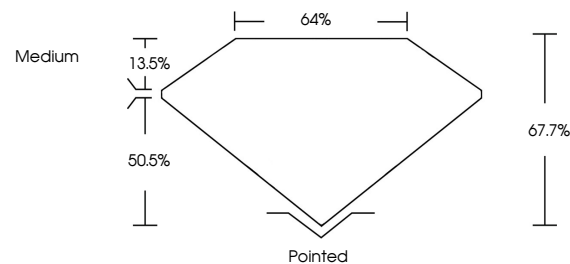
**IGI**

May 3, 2024  
IGI Report No. LG632478429  
CUT CORNERED RECT. MODIFIED BRILLIANT  
9.15 X 6.06 X 4.10 MM  
1.94 CARAT  
H  
VVS 2  
67.7%  
64%  
Medium  
Pointed  
EXCELLENT  
EXCELLENT  
NONE  
IGI LG632478429

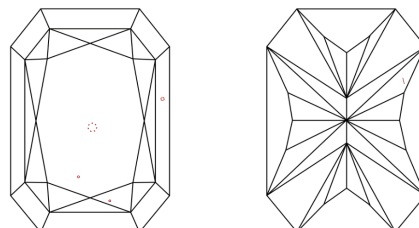
Comments: This Laboratory Grown Diamond was created by Chemical Vapor Deposition (CVD) growth process and may include post-growth treatment. Type IIa



**PROPORTIONS**



**CLARITY CHARACTERISTICS**



**KEY TO SYMBOLS**

Red symbols indicate internal characteristics.  
Green symbols indicate external characteristics.

**COLOR**

D E F G H I J Faint Very Light Light

**CLARITY**

IF	VS <sup>1-2</sup>	VS <sup>1-2</sup>	SI <sup>1-2</sup>	I <sup>1-3</sup>
Internally Flawless	Very Very Slightly Included	Very Slightly Included	Slightly Included	Included